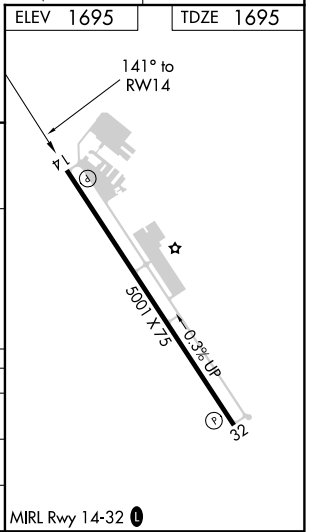
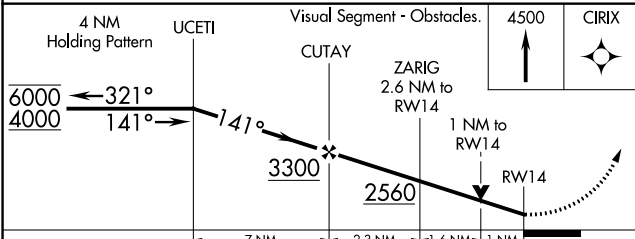
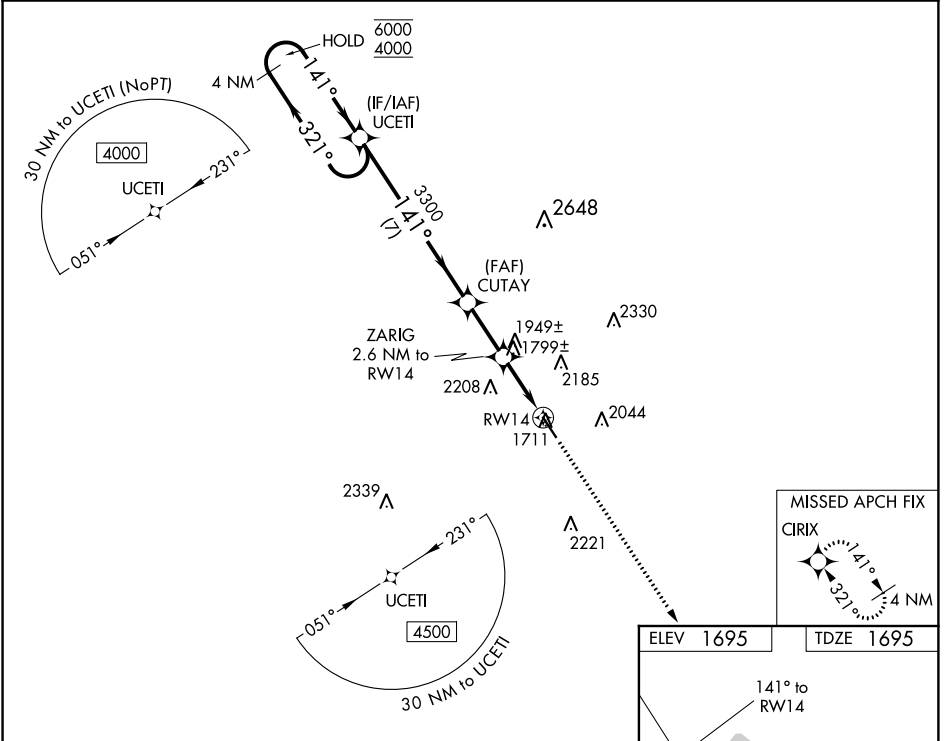


WAAS CH 78030 W14A	APP CRS 141°	Rwy Idg TDZE 1695 Apt Elev 1695	5001
--	------------------------	---	-------------

RNAV (GPS) RWY 14

GILLESPIE COUNTY (T82)

RNP APCH.		MISSED APPROACH: Climb to 4500 direct CIRIX and hold.	
AWOS-3 120.0	HOUSTON CENTER 134.2 307.3	GCO 121.725 0	UNICOM 122.7 (CTAF) 0



4 NM Holding Pattern	UCETI	Visual Segment - Obstacles.	4500	CIRIX
6000 ← 321°	4000	CUTAY	↑	✧
		ZARIG 2.6 NM to RW14		
		1 NM to RW14		
		RW14		
CATEGORY	A	B	C	D
LP MDA	2060-1 365 (400-1)			NA
LNAV MDA	2200-1	505 (600-1)	2200-1 3/8 505 (600-1 3/8)	NA
CIRCLING	2200-1 505 (600-1)	2340-1 645 (700-1)	2480-2 1/4 785 (800-2 1/4)	NA

SC-3, 10 OCT 2019 to 07 NOV 2019

SC-3, 10 OCT 2019 to 07 NOV 2019