

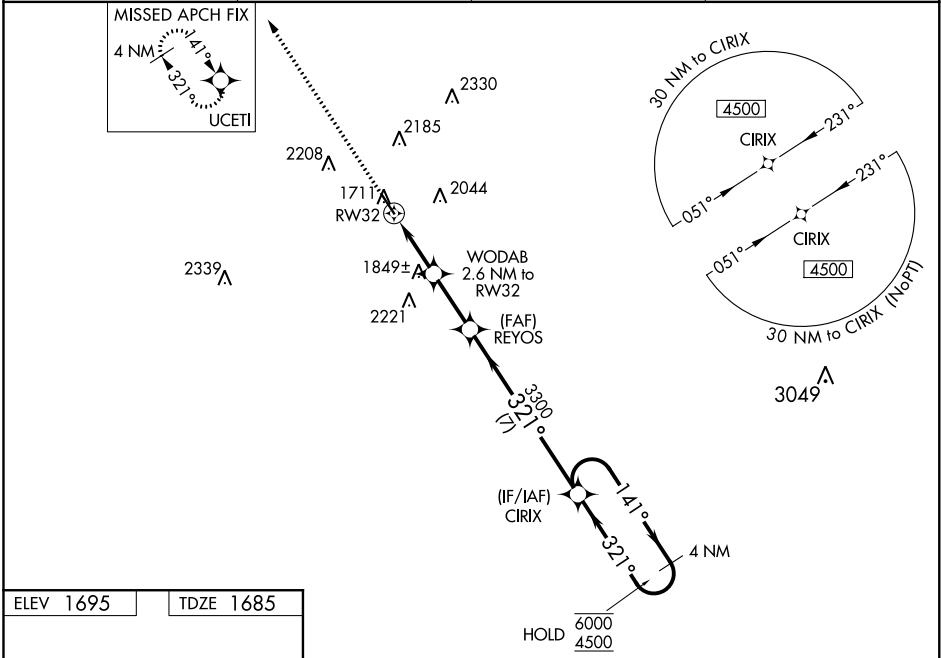
WAAS CH 81930 W32A	APP CRS 321°	Rwy Idg TDZE Apt Elev	5001 1685 1695
--	------------------------	-----------------------------	---

RNAV (GPS) RWY 32

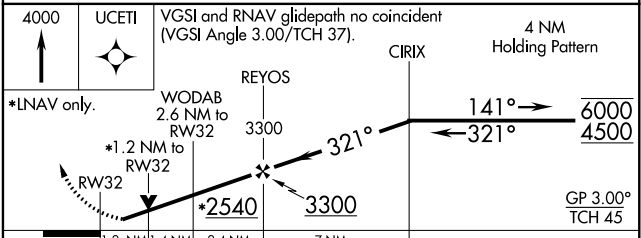
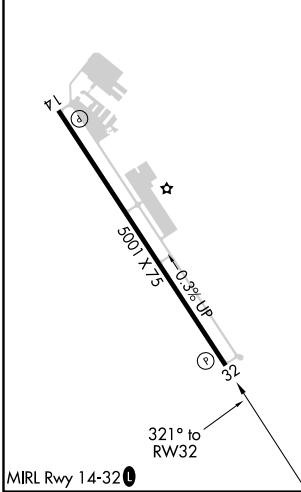
GILLESPIE COUNTY (T82)

RNP APCH.	<p>▼ Rwy 32 helicopter visibility reduction below 3/4 SM NA. ▲ For uncompensated Baro-VNAV systems, LNAV/VNAV NA below -18°C or above 54°C.</p>	MISSED APPROACH: Climb to 4000 direct UCETI and hold.
AWOS-3 120.0		HOUSTON CENTER 134.2 307.3

UNICOM 122.7 (CTAF) 0



ELEV 1695	TDZE 1685
-----------	-----------



CATEGORY	A	B	C	D
LPV DA	1935-1	250 (300-1)		NA
LNAV/VNAV DA	1967-1	282 (300-1)		NA
LNAV MDA	2100-1	415 (500-1)	2100-1 1/4 415 (500-1 1/4)	NA
CIRCLING	2200-1 505 (600-1)	2340-1 645 (700-1)	2480-2 1/4 785 (800-2 1/4)	NA

SC-3, 10 OCT 2019 to 07 NOV 2019

SC-3, 10 OCT 2019 to 07 NOV 2019