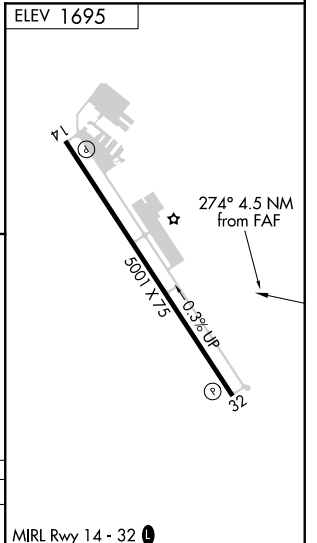
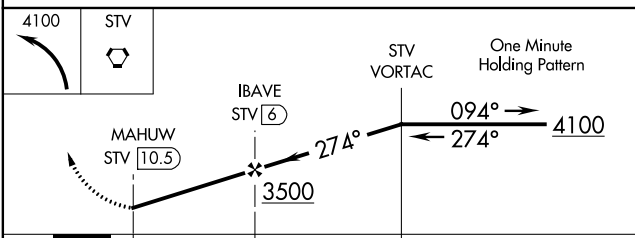
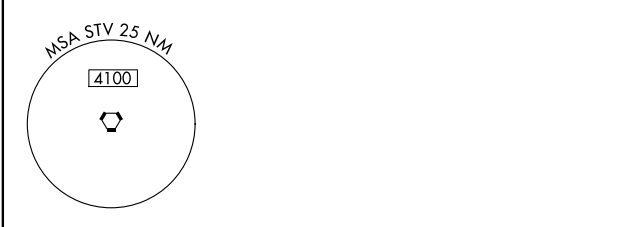
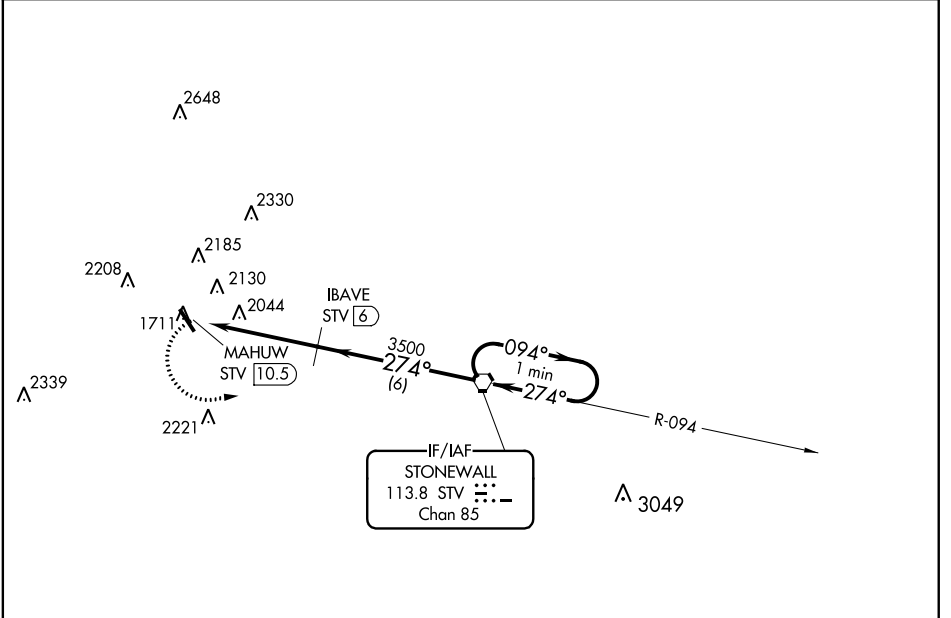


VORTAC STV 113.8 Chan 85	APP CRS 274°	Rwy Idg TDZE Apt Elev N/A N/A 1695
--	------------------------	--

VOR/DME-A
GILLESPIE COUNTY (T82)

<p>▼ When local altimeter setting not received, use Kerrville altimeter setting and increase MDA 60 feet and Cat C visibility ¼ mile.</p> <p>▲</p>	<p>MISSED APPROACH: Climbing left turn to 4100 direct STV VORTAC and hold.</p>
--	--

<p>AWOS-3 120.0</p>	<p>HOUSTON CENTER 134.2 307.3</p>	<p>GCO 121.725 0</p>	<p>UNICOM 122.7 (CTAF) 0</p>
--------------------------------	--	---------------------------------	---



CATEGORY	A	B	C	D
CIRCLING	2440-1 745 (800-1)	2440-1¼ 745 (800-1¼)	2480-2¼ 785 (800-2¼)	NA

SC-3, 10 OCT 2019 to 07 NOV 2019

SC-3, 10 OCT 2019 to 07 NOV 2019