

WAAS CH 93516 W17A	APP CRS 171°	Rwy Idg TDZE Apt Elev	5000 5 5
--	------------------------	-----------------------------	-------------------------------------

RNAV (GPS) RWY 17

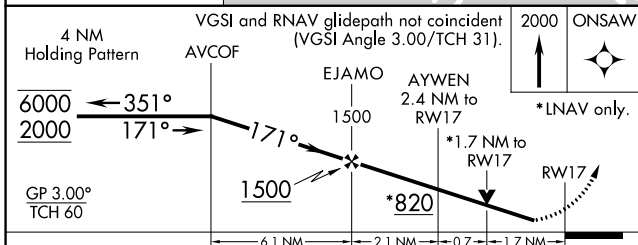
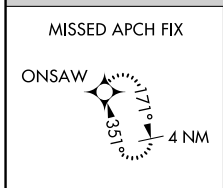
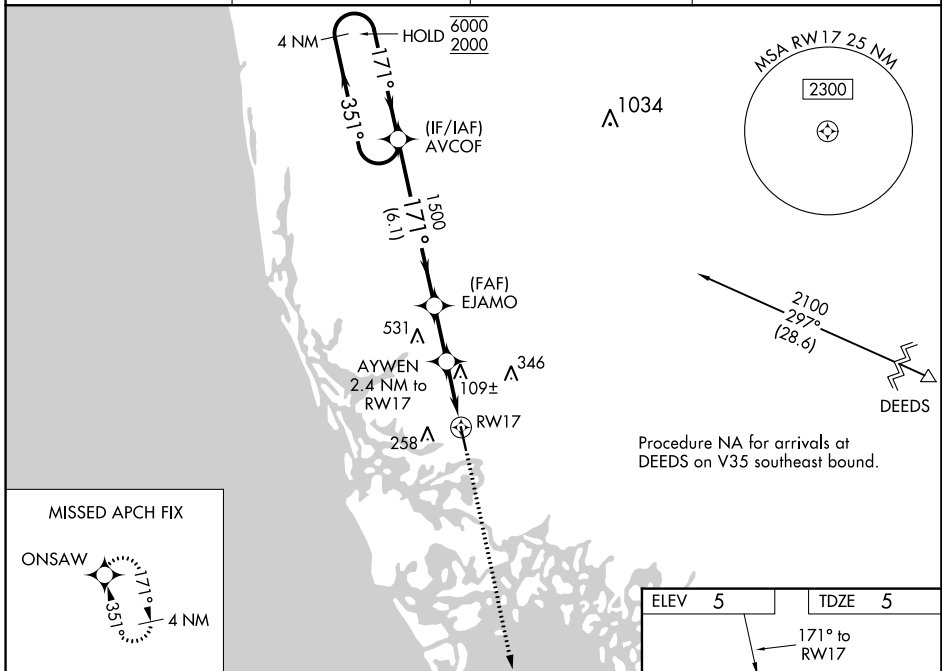
MARCO ISLAND EXECUTIVE (MKY)

PBN APCH.

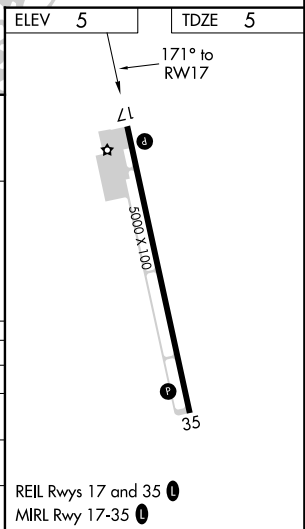
Baro-VNAV and VDP NA when using Naples altimeter setting.
Rwy 17 helicopter visibility reduction below 3/4 SM NA. For uncompensated Baro-VNAV systems, LNAV/VNAV NA below 2°C or above 54°C.
When local altimeter setting not received, use Naples altimeter setting and increase all DA 26 feet and all MDA 40 feet; increase LNAV/VNAV all Cats visibility 1/4 SM.

MISSED APPROACH: Climb to 2000 direct ONSAW and hold.

AWOS-3PT 120.075	FORT MYERS APP CON * 124.125 371.85	CLNC DEL 120.8	UNICOM 122.7 (CTAF) 0
----------------------------	---	--------------------------	--



CATEGORY	A	B	C	D
LPV DA		300-1	295 (300-1)	
LNAV/VNAV DA		458-1½	453 (500-1½)	
LNAV MDA	560-1	555 (600-1)	560-1½ 555 (600-1½)	560-1¾ 555 (600-1¾)
CIRCLING	620-1	615 (700-1)	620-1¾ 615 (700-1¾)	620-2 615 (700-2)



SE-3, 10 OCT 2019 to 07 NOV 2019

SE-3, 10 OCT 2019 to 07 NOV 2019