

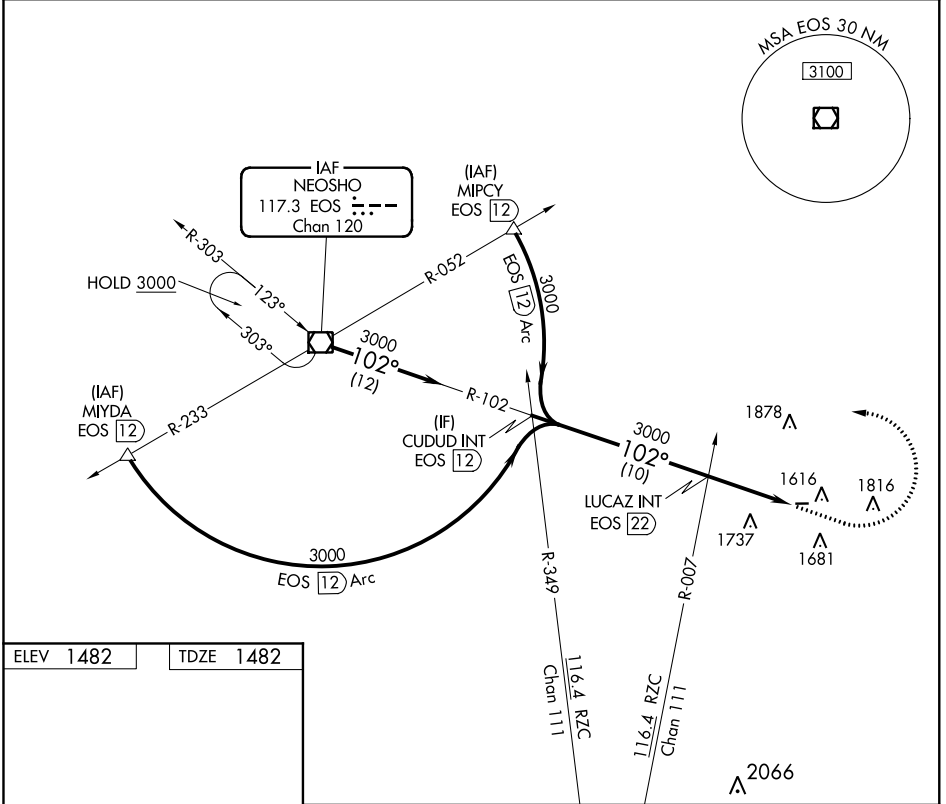
VOR/DME EOS 117.3 Chan 120	APP CRS 102°	Rwy Idg 3599 TDZE 1482 Apt Elev 1482
--	------------------------	---

VOR RWY 9
CASSVILLE MUNI (94K)

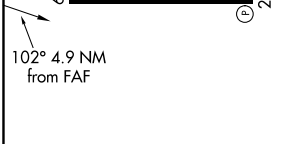
NA Helicopter visibility reduction below 3/4 SM NA. Use Monett altimeter setting; when not received, use Rogers altimeter setting. Procedure NA at night.

MISSED APPROACH: Climb to 3100 then left turn direct EOS VOR/DME and hold.

HFJ AWOS-3 118.275	SPRINGFIELD APP CON 124.95 318.2	CTAF 122.9
------------------------------	--	----------------------



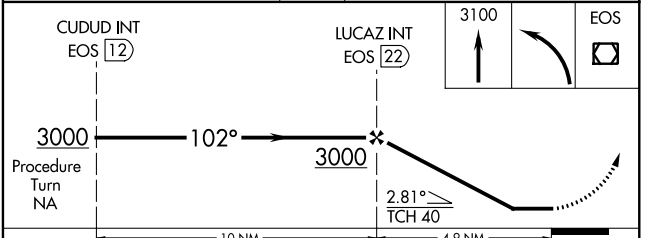
ELEV 1482	TDZE 1482
------------------	------------------



MIRL Rwy 9-27

FAF to MAP 4.9 NM

Knots	60	90	120	150	180
Min:Sec	4:54	3:16	2:27	1:58	1:38



CATEGORY	A	B	C	D
S-9	2060-1 578 (600-1)	2060-1¼ 578 (600-1¼)	2060-1½ 578 (600-1½)	NA
CIRCLING	2060-1 578 (600-1)	2060-1¼ 578 (600-1¼)	2060-1½ 578 (600-1½)	NA

NC-3, 10 OCT 2019 to 07 NOV 2019

NC-3, 10 OCT 2019 to 07 NOV 2019