

WAAS CH <b>72628</b> <b>W36A</b>	APP CRS <b>358°</b>	Rwy Idg TDZE <b>256</b> Apt Elev <b>256</b>	<b>3204</b>
--	------------------------	---	-------------

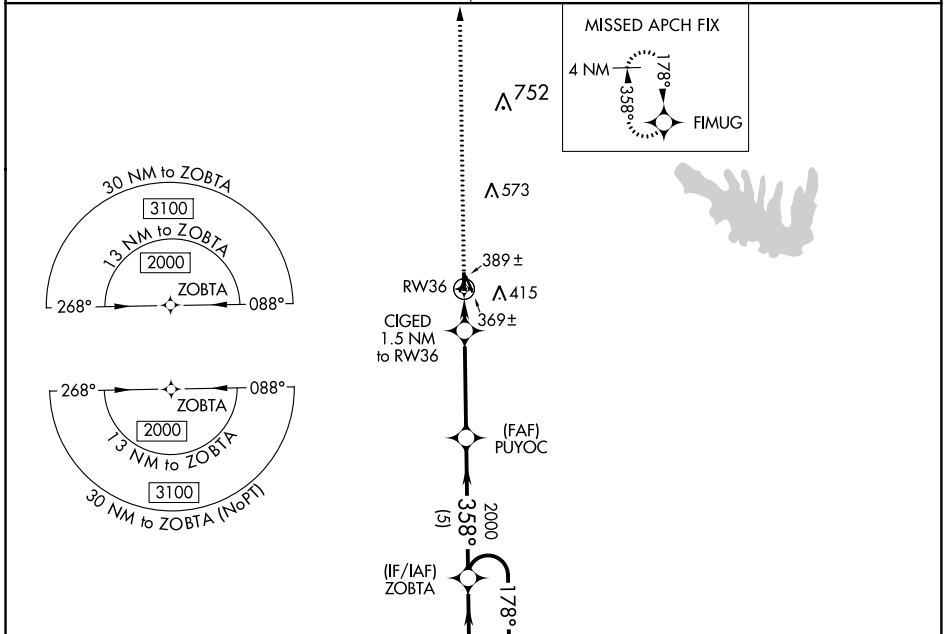
# RNAV (GPS) RWY 36

JONESBORO (F88)

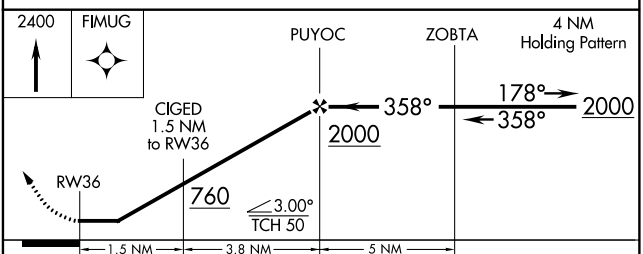
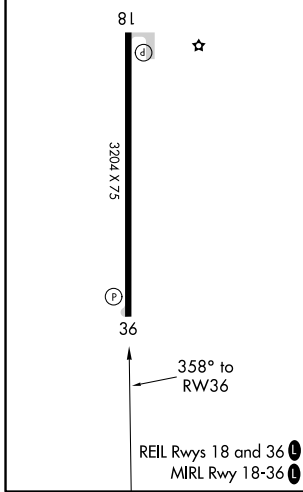
**NA** Procedure NA at night. DME/DME RNP-0.3 NA. Helicopter visibility reduction below 1 SM NA. Obtain local altimeter setting on CTAF; when not received, use Rston altimeter setting and increase all MDA 60 feet, and increase LP and LNAV Cat C visibility ¼ mile.

**MISSED APPROACH:**  
Climb to 2400 direct FIMUG and hold.

MONROE APP CON ★ **126.9 307.9** (CTAF) **122.9 0**



ELEV	256	TDZE	256
------	-----	------	-----



CATEGORY	A	B	C	D
LP MDA	620-1 364 (400-1)			NA
LNAV MDA	640-1	384 (400-1)	640-1½ 384 (400-1½)	NA
CIRCLING	780-1	524 (600-1)	780-1½ 524 (600-1½)	NA

SC-4, 10 OCT 2019 to 07 NOV 2019

SC-4, 10 OCT 2019 to 07 NOV 2019