

(BLTWY6.BLTWY) 19115

AL-6460 (FAA)

PEARLAND RGNL (LVJ)
HOUSTON, TEXAS

BLTWY SIX DEPARTURE (RNAV)

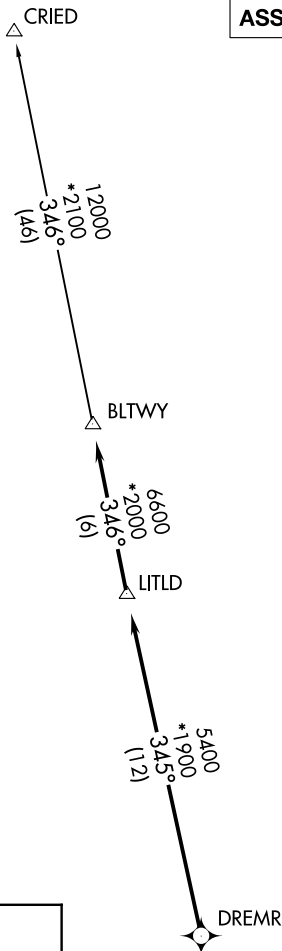
ASOS
118.525
CLNC DEL
124.0
CTAF
122.8
HOUSTON DEP CON
134.45 284.0

**TOP ALTITUDE:
ASSIGNED BY ATC**

NOTE: RADAR required.
NOTE: DME/DME/IRU or GPS required.
NOTE: RNAV 1.

TAKEOFF MINIMUMS

Rwys 14, 32: Standard with minimum climb of 500' per NM to 560.



DEPARTURE ROUTE DESCRIPTION

TAKEOFF RWY 14: Climb heading 142° to 1600 for RADAR vectors to DREMR, thence . . .

TAKEOFF RWY 32: Climb heading 322° to 700 for RADAR vectors to DREMR, thence . . .

...on track 345° to LITLD, then on track 346° to BLTWY, then on (transition). Maintain ATC assigned altitude. Expect filed altitude 10 minutes after departure.

CRIED TRANSITION (BLTWY6.CRIED)

NOTE: Chart not to scale.

BLTWY SIX DEPARTURE (RNAV)

(BLTWY6.BLTWY) 25APR19

HOUSTON, TEXAS
PEARLAND RGNL (LVJ)

SC-5, 10 OCT 2019 to 07 NOV 2019

SC-5, 10 OCT 2019 to 07 NOV 2019