

(INDIE7.INDIE) 19115

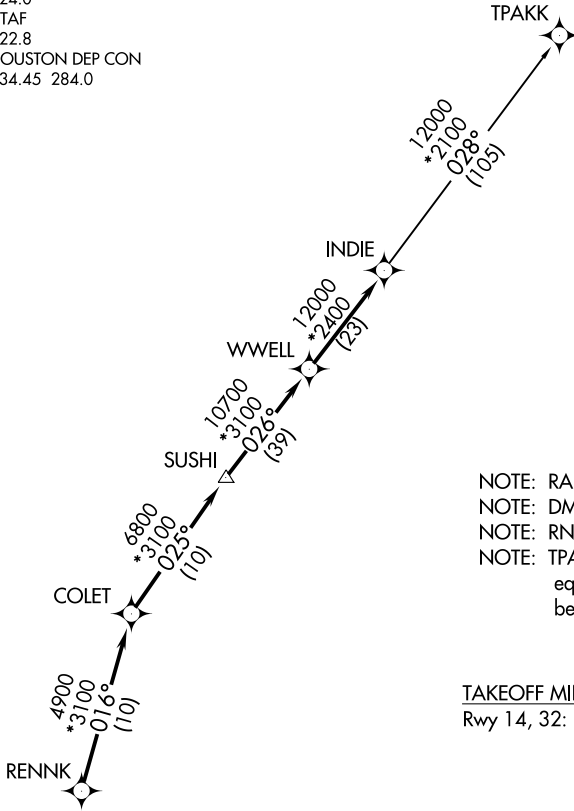
AL-6460 (FAA)

PEARLAND RGNL (LVJ)  
HOUSTON, TEXAS

# INDIE SEVEN DEPARTURE (RNAV)

ASOS  
118.525  
CLNC DEL  
124.0  
CTAF  
122.8  
HOUSTON DEP CON  
134.45 284.0

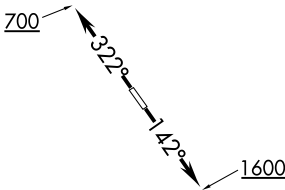
**TOP ALTITUDE:  
ASSIGNED BY ATC**



- NOTE: RADAR required.
- NOTE: DME/DME/IRU or GPS required.
- NOTE: RNAV 1.
- NOTE: TPAKK TRANSITION: For non GPS equipped aircraft TNV DME must be operational.

### TAKEOFF MINIMUMS

Rwy 14, 32: Standard with minimum climb of 500' per NM to 560.



### DEPARTURE ROUTE DESCRIPTION

TAKEOFF RWY 14: Climb heading 142° to 1600

for RADAR vectors to RENNK, thence . . . .

TAKEOFF RWY 32: Climb heading 322° to 700

for RADAR vectors to RENNK, thence . . . .

. . . . on track 016° to COLET, then on track 025° to SUSHI, then on track 026° to WWELL, then on track 026° to INDIE, then on (transition).

Maintain ATC assigned altitude. Expect filed altitude 10 minutes after departure.

TPAKK TRANSITION (INDIE7.TPAKK)

NOTE: Chart not to scale.

# INDIE SEVEN DEPARTURE (RNAV)

(INDIE7.INDIE) 25APR19

HOUSTON, TEXAS  
PEARLAND RGNL (LVJ)

SC-5, 10 OCT 2019 to 07 NOV 2019

SC-5, 10 OCT 2019 to 07 NOV 2019