

(LURIC7.LURIC) 19115

AL-6460 (FAA)

PEARLAND RGNL (L.VJ)

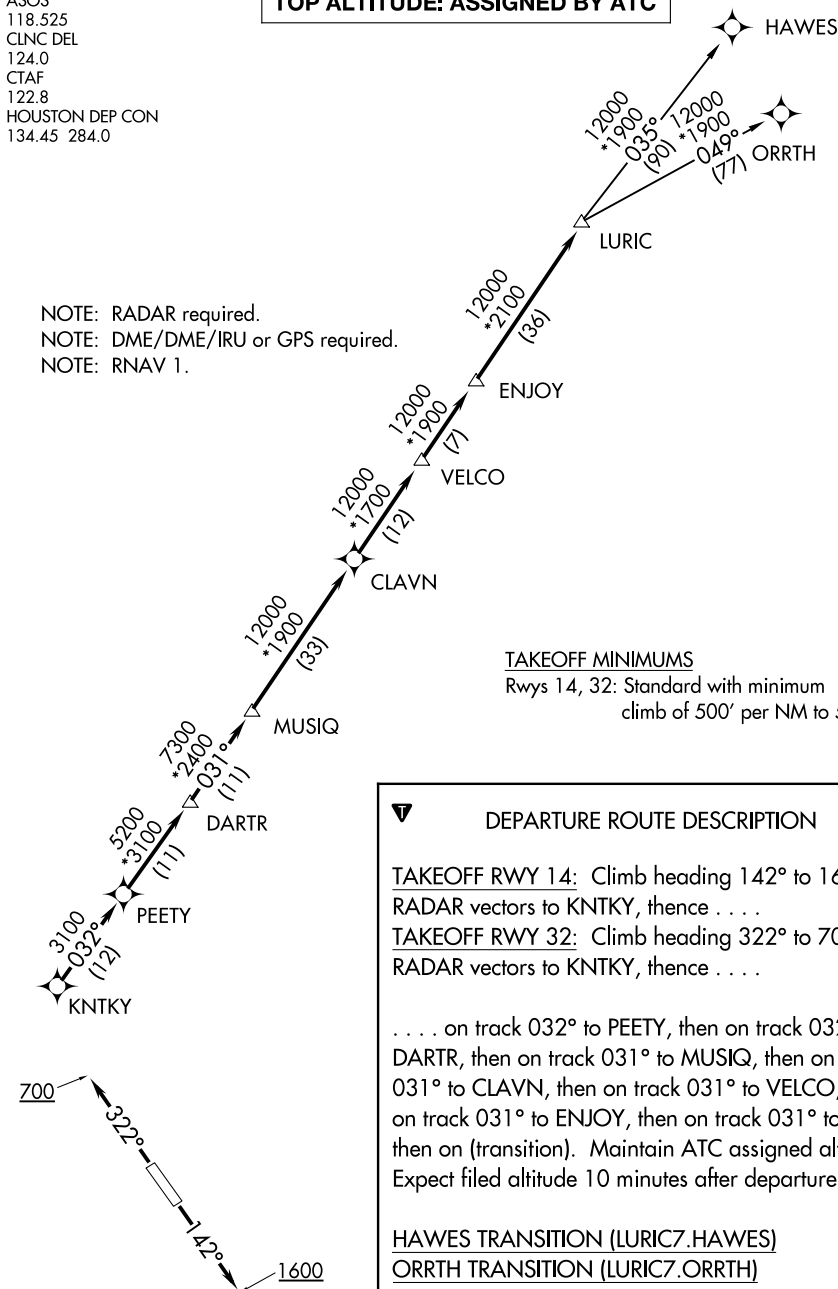
LURIC SEVEN DEPARTURE (RNAV)

HOUSTON, TEXAS

ASOS
118.525
CLNC DEL
124.0
CTAF
122.8
HOUSTON DEP CON
134.45 284.0

TOP ALTITUDE: ASSIGNED BY ATC

NOTE: RADAR required.
NOTE: DME/DME/IRU or GPS required.
NOTE: RNAV 1.



TAKEOFF MINIMUMS

Rwys 14, 32: Standard with minimum climb of 500' per NM to 560.

DEPARTURE ROUTE DESCRIPTION

TAKEOFF RWY 14: Climb heading 142° to 1600 for RADAR vectors to KNTKY, thence . . .

TAKEOFF RWY 32: Climb heading 322° to 700 for RADAR vectors to KNTKY, thence . . .

. . . on track 032° to PEETY, then on track 032° to DARTR, then on track 031° to MUSIQ, then on track 031° to CLAVN, then on track 031° to VELCO, then on track 031° to ENJOY, then on track 031° to LURIC, then on (transition). Maintain ATC assigned altitude. Expect filed altitude 10 minutes after departure.

HAWES TRANSITION (LURIC7.HAWES)

ORRTH TRANSITION (LURIC7.ORRTH)

NOTE: Chart not to scale.

LURIC SEVEN DEPARTURE (RNAV)

(LURIC7.LURIC) 25APR19

HOUSTON, TEXAS

PEARLAND RGNL (L.VJ)

SC-5, 10 OCT 2019 to 07 NOV 2019

SC-5, 10 OCT 2019 to 07 NOV 2019