

STRYA SEVEN DEPARTURE (RNAV)

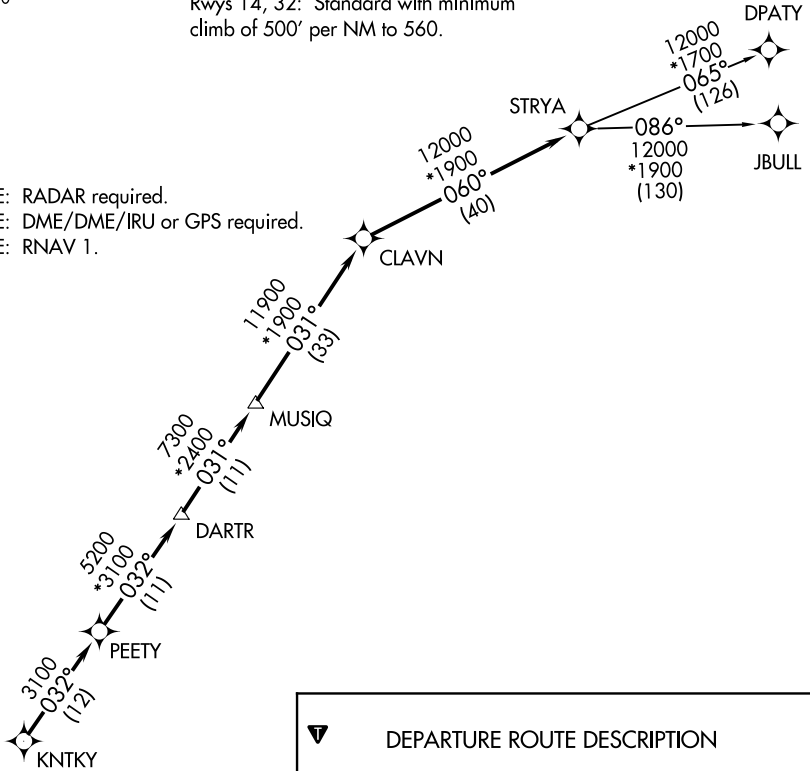
ASOS
118.525
CTAF
122.8
CLNC DEL
124.0
HOUSTON DEP CON
134.45 284.0

TOP ALTITUDE: ASSIGNED BY ATC

TAKEOFF MINIMUMS

Rwys 14, 32: Standard with minimum climb of 500' per NM to 560.

NOTE: RADAR required.
NOTE: DME/DME/IRU or GPS required.
NOTE: RNAV 1.



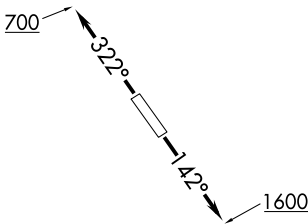
▼ DEPARTURE ROUTE DESCRIPTION

TAKEOFF RWY 14: Climb heading 142° to 1600 for RADAR vectors to KNTKY, thence

TAKEOFF RWY 32: Climb heading 322° to 700 for RADAR vectors to KNTKY, thence

. . . . on track 032° to PEETY, then on track 032° to DARTR, then on track 031° to MUSIQ, then on track 031° to CLAVN, then on track 060° to STRYA, then on (transition). Maintain ATC assigned altitude. Expect filed altitude 10 minutes after departure.

DPATY TRANSITION (STRYA7.DPATY)
JBULL TRANSITION (STRYA7.JBULL)



NOTE: Chart not to scale.

SC-5, 10 OCT 2019 to 07 NOV 2019

SC-5, 10 OCT 2019 to 07 NOV 2019