

(STYCK7.STYCK) 19115

AL-6460 (FAA)

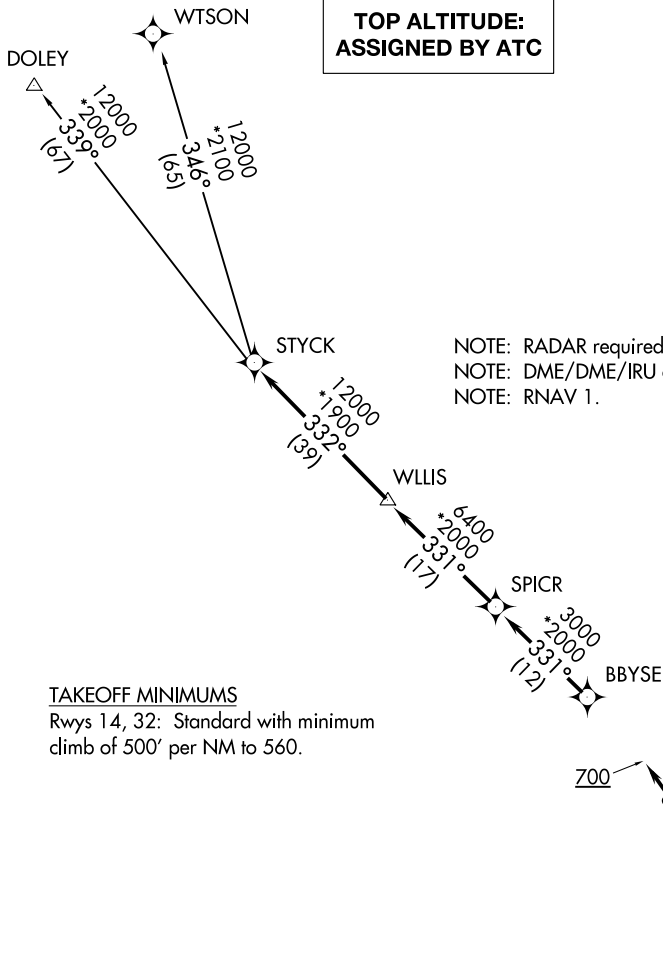
PEARLAND RGNL (L.V.J)

# STYCK SEVEN DEPARTURE (RNAV)

HOUSTON, TEXAS

**TOP ALTITUDE:  
ASSIGNED BY ATC**

ASOS  
 118.525  
 CLNC DEL  
 124.0  
 CTAF  
 122.8  
 HOUSTON DEP CON  
 134.45 284.0



NOTE: RADAR required.  
 NOTE: DME/DME/IRU or GPS required.  
 NOTE: RNAV 1.

### TAKEOFF MINIMUMS

Rwys 14, 32: Standard with minimum  
 climb of 500' per NM to 560.

NOTE: Chart not to scale.

### DEPARTURE ROUTE DESCRIPTION

TAKEOFF RWY 14: Climb heading 142° to 1600 for RADAR vectors to BBYSE, thence. . . .

TAKEOFF RWY 32: Climb heading 322° to 700 for RADAR vectors to BBYSE, thence. . . .

. . . .on track 331° to SPICR, then on track 331° to WLLIS, then on track 332° to STYCK, then on  
 (transition). Maintain ATC assigned altitude. Expect filed altitude 10 minutes after departure.

DOLEY TRANSITION (STYCK7.DOLEY)

WTSON TRANSITION (STYCK7.WTSON)

# STYCK SEVEN DEPARTURE (RNAV)

(STYCK7.STYCK) 25APR19

HOUSTON, TEXAS

PEARLAND RGNL (L.V.J)

SC-5, 10 OCT 2019 to 07 NOV 2019

SC-5, 10 OCT 2019 to 07 NOV 2019