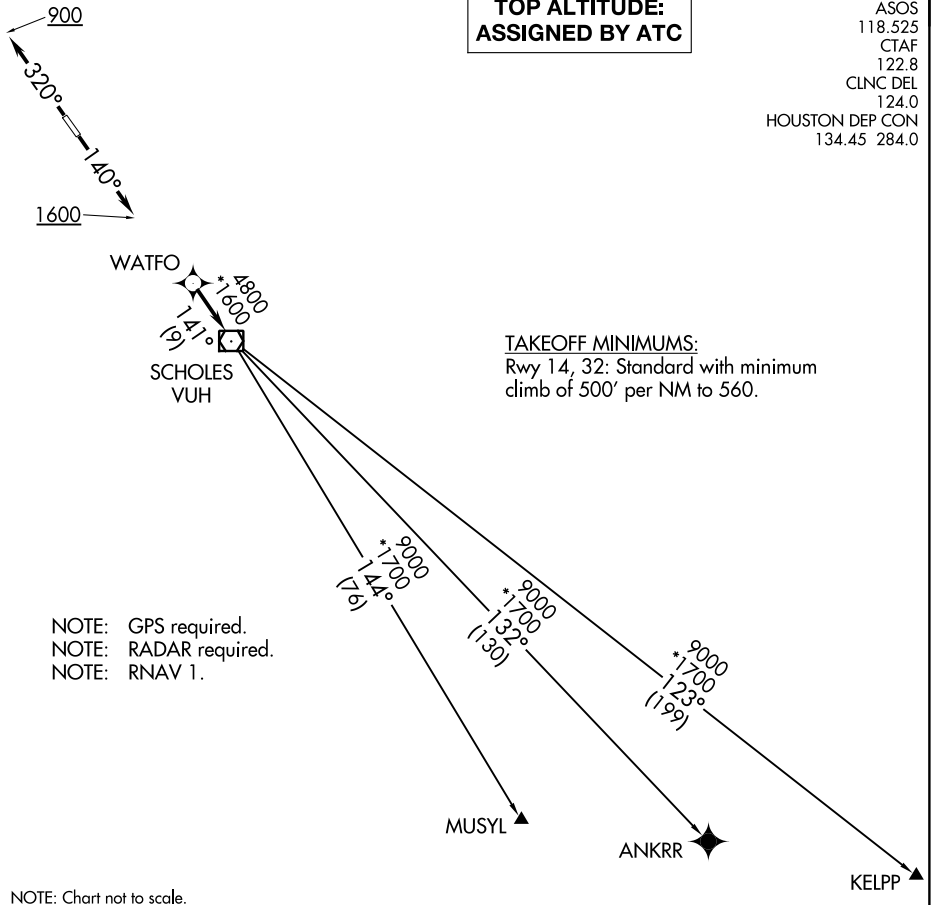


WATFO FIVE DEPARTURE (RNAV)

**TOP ALTITUDE:
ASSIGNED BY ATC**

ASOS
118.525
CTAF
122.8
CLNC DEL
124.0
HOUSTON DEP CON
134.45 284.0



NOTE: GPS required.
NOTE: RADAR required.
NOTE: RNAV 1.

TAKEOFF MINIMUMS:
Rwy 14, 32: Standard with minimum
climb of 500' per NM to 560.

NOTE: Chart not to scale.

SC-5, 10 OCT 2019 to 07 NOV 2019

SC-5, 10 OCT 2019 to 07 NOV 2019



DEPARTURE ROUTE DESCRIPTION

TAKEOFF RWY 14: Climb on heading 140° to 1600, for RADAR vectors to WATFO, thence. . . .

TAKEOFF RWY 32: Climb on heading 320° to 900, for RADAR vectors to WATFO, thence. . . .

. . . .on track 141° to VUH VOR/DME, then on (transition). Maintain ATC assigned altitude. Expect filed altitude 10 minutes after departure.

ANKRR TRANSITION (WATFO5.ANKRR)

KELPP TRANSITION (WATFO5.KELPP)

MUSYL TRANSITION (WATFO5.MUSYL)

WATFO FIVE DEPARTURE (RNAV)