

# WYLSN SEVEN DEPARTURE (RNAV)

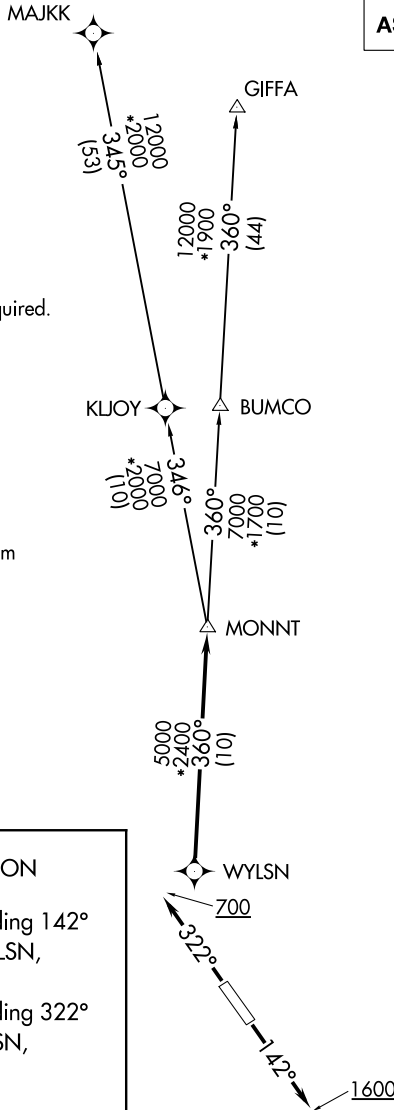
ASOS  
 118.525  
 CLNC DEL  
 124.0  
 CTAF  
 122.8  
 HOUSTON DEP CON  
 134.45 284.0

NOTE: RADAR required.  
 NOTE: DME/DME/IRU or GPS required.  
 NOTE: RNAV 1.

### TAKEOFF MINIMUMS

Rwy 14, 32: Standard with minimum climb of 500' per NM to 560.

**TOP ALTITUDE:  
 ASSIGNED BY ATC**



**DEPARTURE ROUTE DESCRIPTION**

TAKEOFF RWY 14: Climb on heading 142° to 1600 for RADAR vectors to WYLSN, thence. . . .

TAKEOFF RWY 32: Climb on heading 322° to 700 for RADAR vectors to WYLSN, thence. . . .

. . . .on track 360° to MONNT, then on (transition). Maintain ATC assigned altitude. Expect filed altitude 10 minutes after departure.

GIFFA TRANSITION (WYLSN7.GIFFA)  
MAJJK TRANSITION (WYLSN7.MAJJK)

NOTE: Chart not to scale.

# WYLSN SEVEN DEPARTURE (RNAV)

SC-5, 10 OCT 2019 to 07 NOV 2019

SC-5, 10 OCT 2019 to 07 NOV 2019