

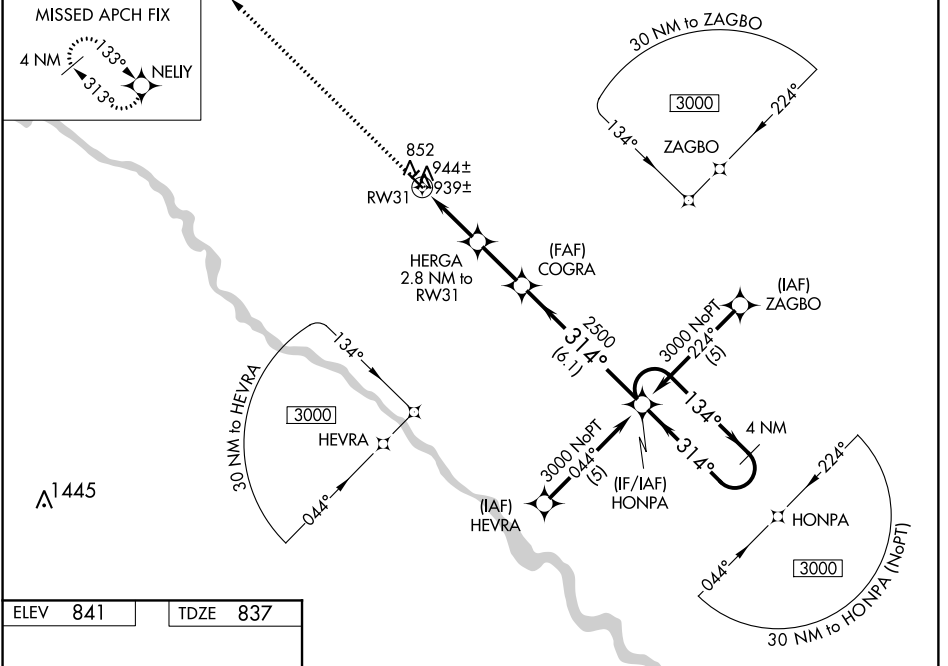
WAAS CH 82515 W31A	APP CRS 314°	Rwy ldg TDZE 837 Apt Elev 841	4012
--	------------------------	---	-------------

RNAV (GPS) RWY 31

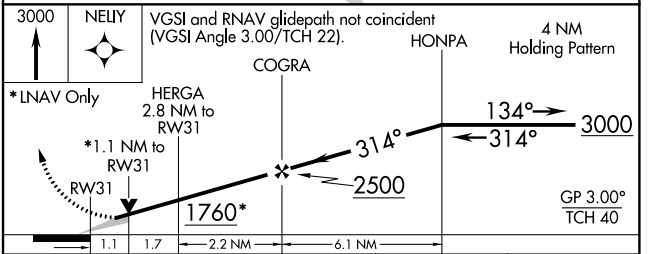
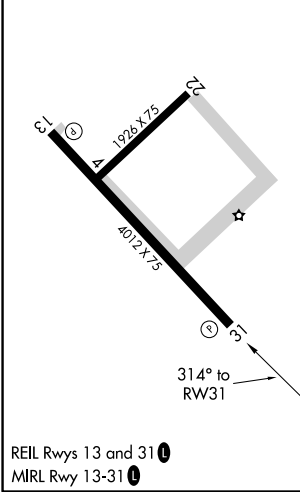
OSKALOOSA MUNI (00A)

RNP APCH.	MISSED APPROACH: Climb to 3000 direct NELY and hold.
<p>▼ When local altimeter setting not received, use Ottumwa altimeter setting and increase all DA 18 feet and all MDA 20 feet and increase LNAV/VNAV all Cats visibility ¼ mile. Baro-VNAV and VDP NA when using Ottumwa altimeter setting. For uncompensated Baro-VNAV systems, LNAV/VNAV NA below -1.6°C (4°F) or above 54°C (130°F).</p>	

AWOS-3 118.625	CHICAGO CENTER 118.15 354.1	UNICOM 122.8 (CTAF) 0
--------------------------	---------------------------------------	---------------------------------



ELEV 841	TDZE 837
----------	----------



CATEGORY	A	B	C	D
LPV DA	1187-1¼	350 (400-1¼)		NA
LNAV/VNAV DA	1209-1¼	372 (400-1¼)		NA
LNAV MDA	1200-1	363 (400-1)		NA
CIRCLING	1260-1 419 (500-1)	1300-1 459 (500-1)	1300-1½ 459 (500-1½)	NA

NC-3, 10 OCT 2019 to 07 NOV 2019

NC-3, 10 OCT 2019 to 07 NOV 2019