

VOR/DME OTM 111.6 Chan 53	APP CRS 321°	Rwy Idg TDZE Apt Elev	4012 837 840
---	------------------------	-----------------------------	---

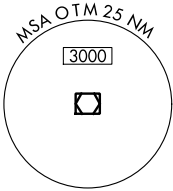
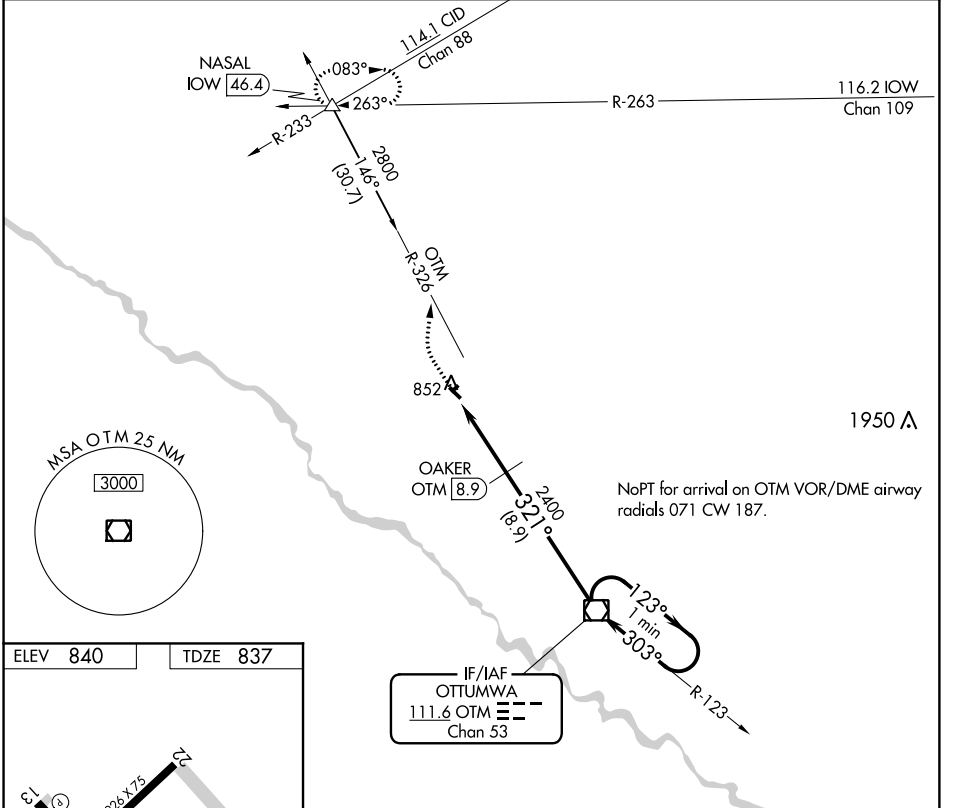
VOR/DME RWY 31

OSKALOOSA MUNI (00A)

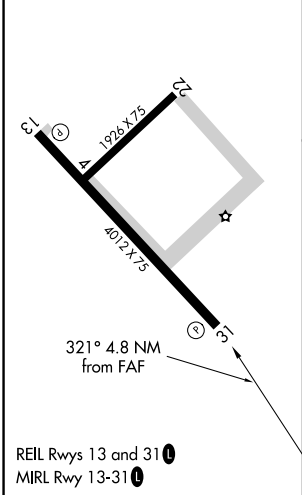
NA If local altimeter setting not received, use Ottumwa altimeter setting and increase all MDAs 20 feet. VDP NA with Ottumwa altimeter setting.

MISSED APPROACH: Climb to 1300 then climbing right turn to 2800 via heading 360° and OTM R-326 to NASAL Int/IOW 46.4 DME and hold.

AWOS-3 118.625	CHICAGO CENTER 118.15 354.1	UNICOM 122.8 (CTAF) 0
--------------------------	---------------------------------------	---------------------------------



ELEV 840	TDZE 837
----------	----------



1300	2800	OTM R-326	NASAL	VGSI and descent angles not coincident (VGSI Angle 3.00/TCH 22).	One Minute Holding Pattern
↑	hdg 360°	△			
	OTM 13.7	OTM 12.6	OAKER OTM 8.9	OTM VOR/DME	
	1.1 NM	3.7 NM	8.9 NM	123° → 2800	← 303°
		≤ 3.00° TCH 40	2400	321°	
CATEGORY	A	B	C	D	
S-31	1220-1 383 (400-1)			NA	
CIRCLING	1260-1 420 (500-1)	1300-1 460 (500-1)	1300-1½ 460 (500-1½)	NA	

NC-3, 10 OCT 2019 to 07 NOV 2019

NC-3, 10 OCT 2019 to 07 NOV 2019