

APP CRS	Rwy Idg	2881
136°	TDZE	1233
	Apt Elev	1232

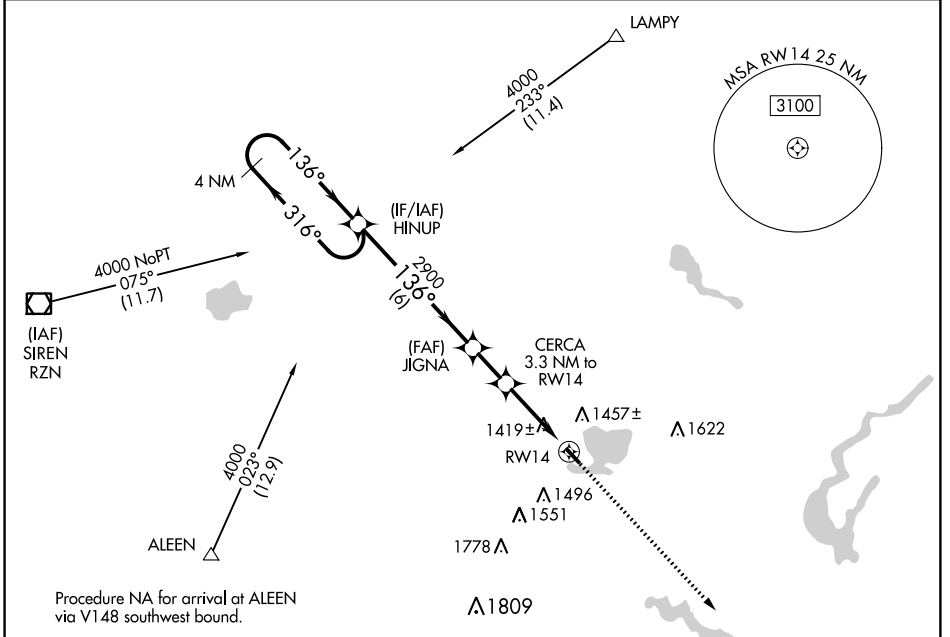
RNAV (GPS) RWY 14

SHELL LAKE MUNI (SSQ)

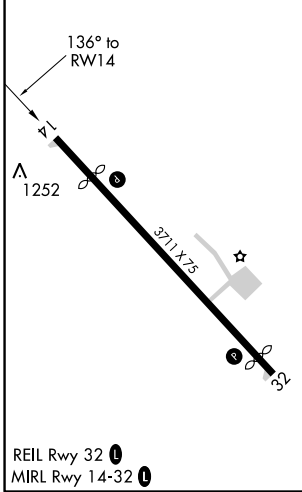
NA DME/DME RNP-0.3 NA. Visibility reduction by helicopters NA. Use Rice Lake altimeter setting; when not received, use Siren altimeter setting and increase all MDAs 20 feet and LNAV Cat D visibility ¼ mile.

MISSED APPROACH: Climb to 4000 direct QESCA and hold.

MINNEAPOLIS CENTER 126.45 276.4	UNICOM 122.8 (CTAF)
---	-------------------------------



ELEV 1232	D	TDZE 1233
-----------	----------	-----------



	4 NM Holding Pattern		4000	QESCA
	HINUP	JIGNA	CERCA 3.3 NM to RWY 14	RWY 14
	VGSIs and descent angles not coincident (VGSi Angle 4.00/TCH 22).			
	6 NM	1.7 NM	3.3 NM	
CATEGORY	A	B	C	D
LNAV MDA	1740-1	507 (600-1)	1740-1½	507 (600-1½)
CIRCLING	1840-1	608 (700-1)	1840-1¾	1860-2
			608 (700-1¾)	628 (700-2)

EC-3, 10 OCT 2019 to 07 NOV 2019

EC-3, 10 OCT 2019 to 07 NOV 2019