

APP CRS	Rwy Idg	3500
316°	TDZE	1233
	Apt Elev	1232

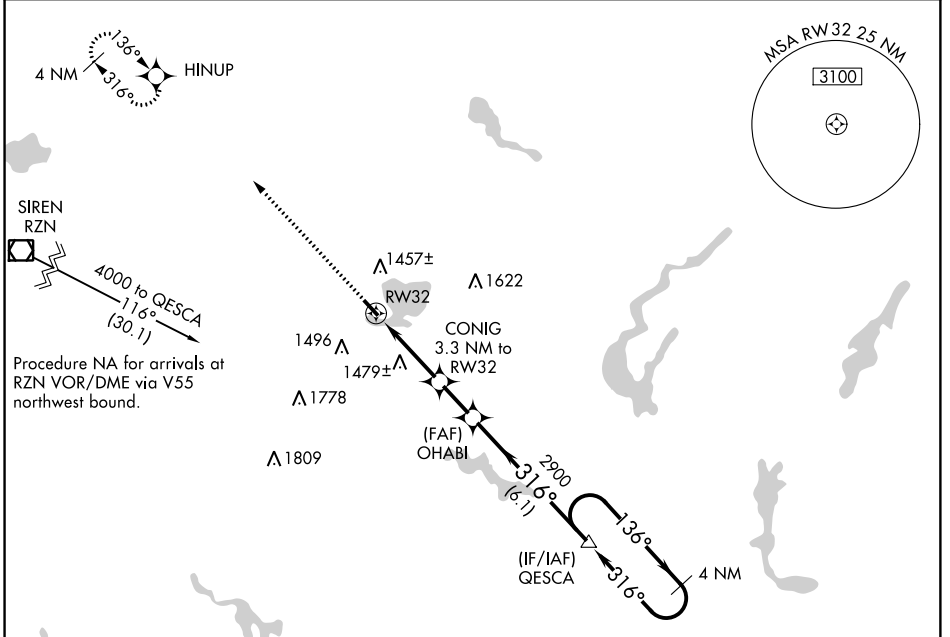
RNAV (GPS) RWY 32

SHELL LAKE MUNI (SSQ)

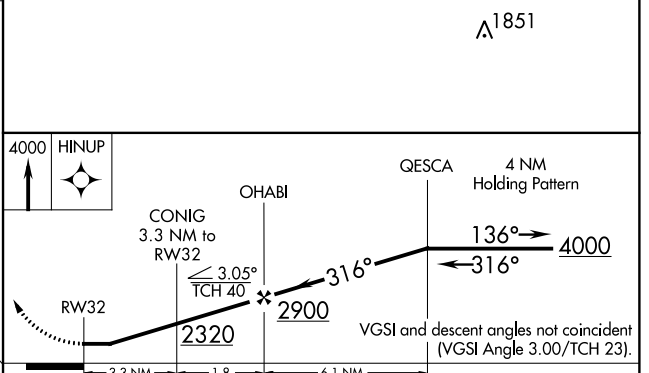
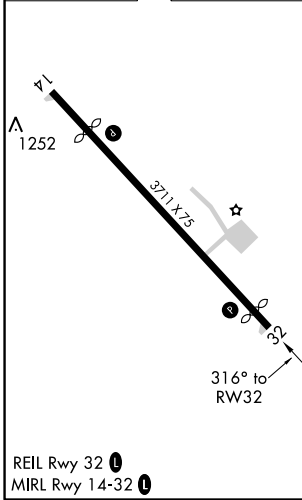
NA DME/DME RNP-0.3 NA. Visibility reduction by helicopters NA. Use Rice Lake altimeter setting; when not received use Siren altimeter setting and increase all MDAs 20 feet.

MISSED APPROACH: Climb to 4000 direct HINUP and hold.

MINNEAPOLIS CENTER 126.45 276.4	UNICOM 122.8 (CTAF)
---	-------------------------------



ELEV 1232	D	TDZE 1233
-----------	----------	-----------



CATEGORY	A	B	C	D
LNAV MDA	1800-1 567 (600-1)	1800-1½ 567 (600-1½)	1800-1¾ 567 (600-1¾)	1800-2 567 (600-2)
CIRCLING	1840-1 608 (700-1)	1840-1¾ 608 (700-1¾)	1860-2 628 (700-2)	

EC-3, 10 OCT 2019 to 07 NOV 2019

EC-3, 10 OCT 2019 to 07 NOV 2019