

WAAS CH <b>99334</b> <b>W04A</b>	APP CRS <b>038°</b>	Rwy ldg TDZE Apt Elev	<b>4204</b> <b>1376</b> <b>1379</b>
--	------------------------	-----------------------------	---

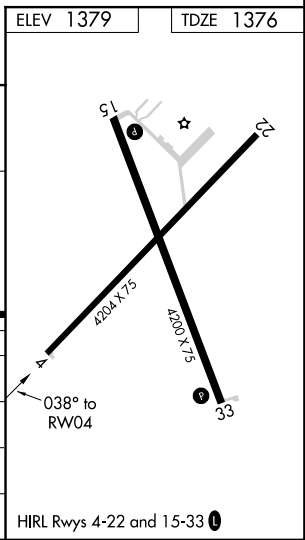
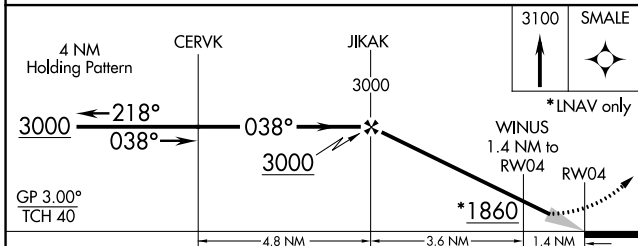
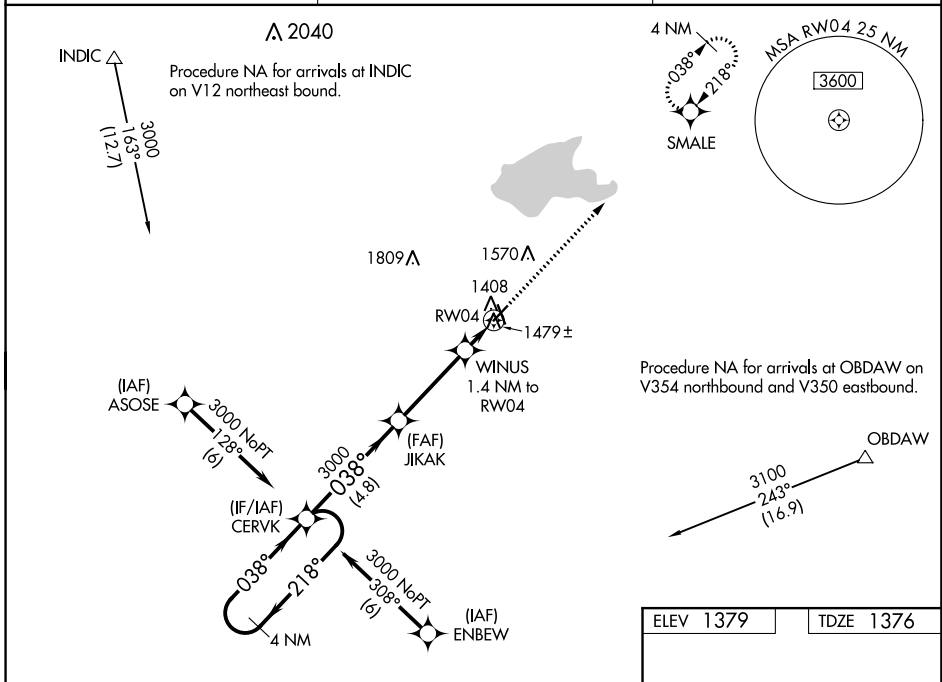
# RNAV (GPS) RWY 4

EL DORADO/CAPTAIN JACK THOMAS MEMORIAL (EQA)

**NA** For uncompensated Baro-VNAV systems, LNAV/VNAV NA below -17°C (2°F) or above 54°C (130°F). DME/DME RNP-0.3 NA. When local altimeter setting not received, use Colonel James Jabara altimeter setting and increase all DA 51 feet and all MDA 60 feet. Baro-VNAV NA when using Colonel James Jabara altimeter setting.

**MISSED APPROACH:** Climb to 3100 direct SMALE and hold.

AWOS-3P <b>120.875</b>	WICHITA APP CON <b>134.8 269.1</b>	UNICOM <b>122.8 (CTAF)</b>
---------------------------	---------------------------------------	-------------------------------



CATEGORY	A	B	C	D
LPV DA	1576-1	200 (200-1)		NA
LNAV/VNAV DA	1626-1	250 (300-1)		NA
LNAV MDA	1740-1	364 (400-1)		NA
<b>CIRCLING</b>	1820-1 441 (500-1)	1960-1 581 (600-1)		NA

# RNAV (GPS) RWY 4

NC-2, 10 OCT 2019 to 07 NOV 2019

NC-2, 10 OCT 2019 to 07 NOV 2019