

WAAS CH <b>53427</b> <b>W18A</b>	APP CRS <b>179°</b>	Rwy Idg TDZE Apt Elev	<b>5500</b> <b>970</b> <b>979</b>
--	------------------------	-----------------------------	---

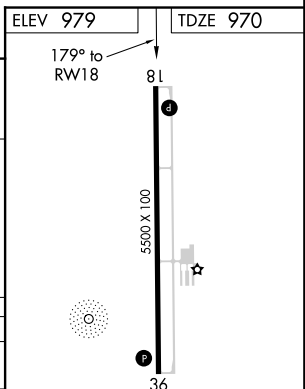
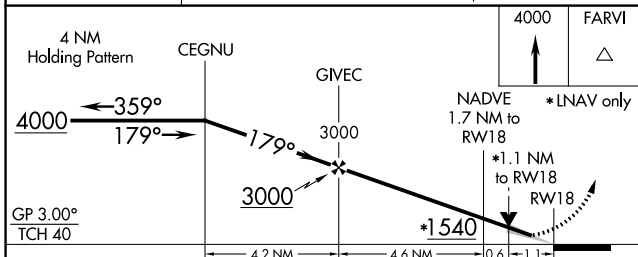
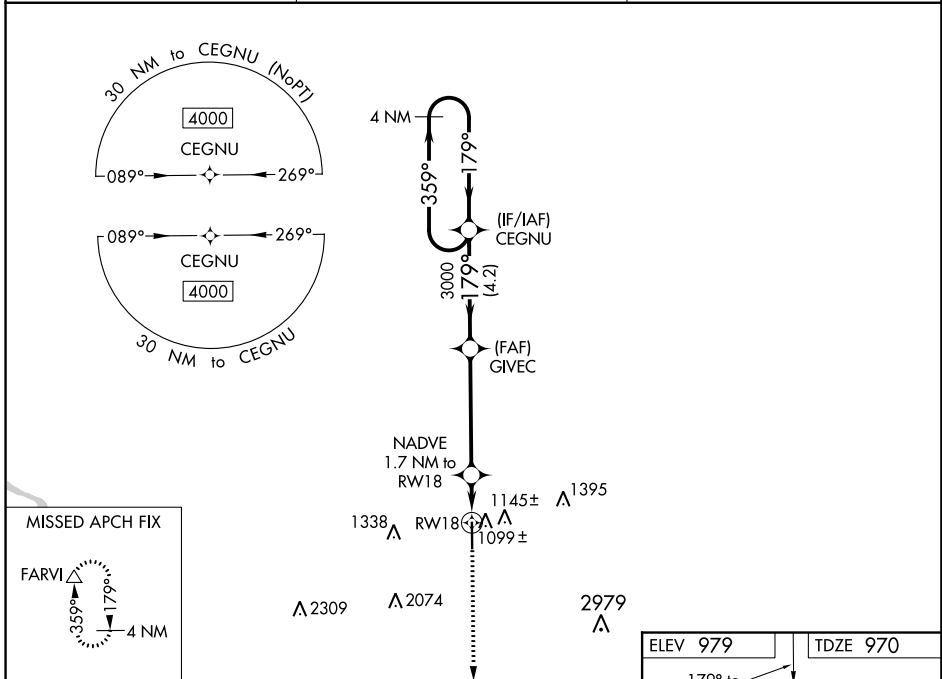
# RNAV (GPS) RWY 18

INDEPENDENCE MUNI (IIB)

**⚠** For uncompensated Baro-VNAV systems, LNAV/VNAV NA below -16°C (4°F) or above 54°C (130°F). DME/DME RNP-0.3 NA.

**MISSED APPROACH:** Climb to 4000 direct FARVI and hold, continue climb-in-hold to 4000.

AWOS-3 <b>120.825</b>	WATERLOO APP CON ★ <b>118.9 251.15</b>	UNICOM <b>122.8</b> (CTAF) <b>0</b>
--------------------------	---	--



CATEGORY	A	B	C	D
LPV DA		1220- <sup>3</sup> / <sub>4</sub>	250 (300- <sup>3</sup> / <sub>4</sub> )	
LNAV/VNAV DA		1280- <sup>7</sup> / <sub>8</sub>	310 (400- <sup>7</sup> / <sub>8</sub> )	
LNAV MDA	1360-1	390 (400-1)	1360-1 <sup>1</sup> / <sub>8</sub>	390 (400-1 <sup>1</sup> / <sub>8</sub> )
<b>C</b> CIRCLING	1500-1	521 (600-1)	1700-2 721 (800-2)	2420-3 1441 (1500-3)

