

WAAS CH <b>90341</b> <b>W36A</b>	APP CRS <b>359°</b>	Rwy Idg TDZE Apt Elev	<b>5500</b> <b>979</b> <b>979</b>
--	------------------------	-----------------------------	---

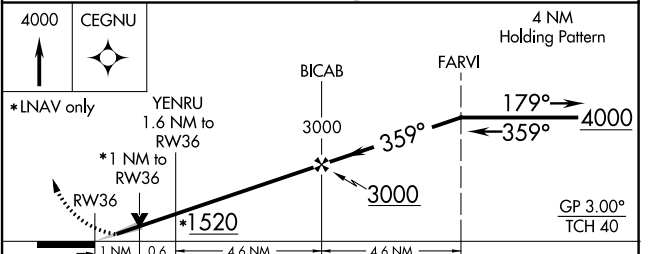
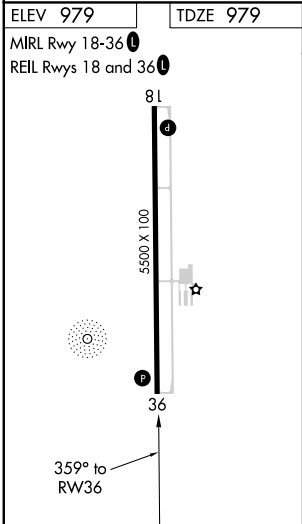
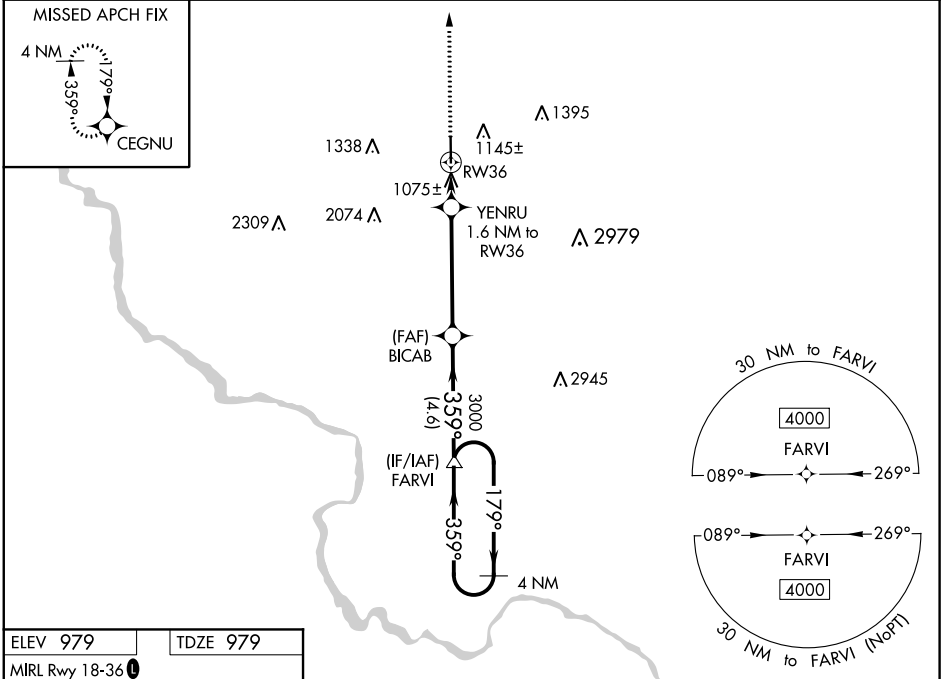
# RNAV (GPS) RWY 36

INDEPENDENCE MUNI (IIB)

**⚠** For uncompensated Baro-VNAV systems, LNAV/VNAV NA below -1.6°C (4°F) or above 54°C (130°F). DME/DME RNP-0.3 NA.

**MISSED APPROACH:** Climb to 4000 direct CEGNU and hold, continue climb-in-hold to 4000.

AWOS-3 <b>120.825</b>	WATERLOO APP CON ★ <b>118.9 251.15</b>	UNICOM <b>122.8 (CTAF) 0</b>
--------------------------	---	---------------------------------



CATEGORY	A	B	C	D
LPV DA		1229-3/4	250 (300-3/4)	
LNAV/VNAV DA		1236-7/8	257 (300-7/8)	
LNAV MDA		1340-1	361 (400-1)	
<b>C</b> CIRCLING	1500-1	521 (600-1)	1700-2 721 (800-2)	2420-3 1441 (1500-3)

NC-3, 10 OCT 2019 to 07 NOV 2019

NC-3, 10 OCT 2019 to 07 NOV 2019