

BORRN FOUR DEPARTURE (RNAV)

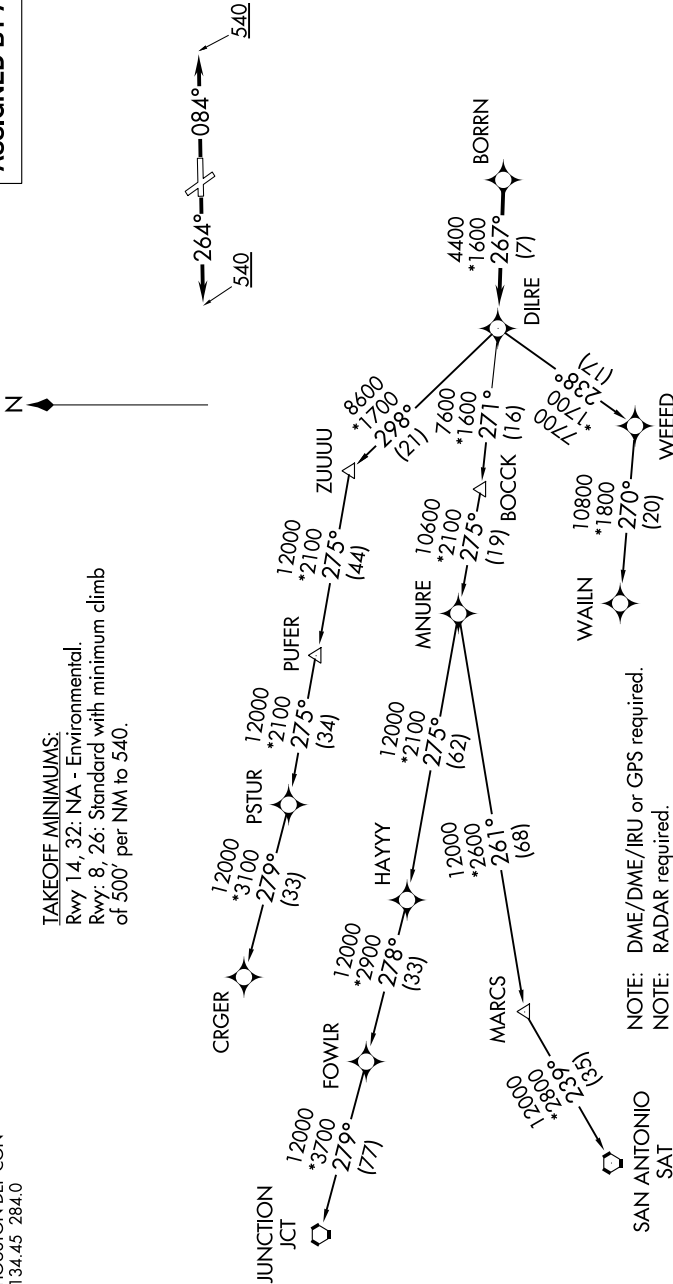
SC-5, 10 OCT 2019 to 07 NOV 2019

CTAF
122.7
HOUSTON DEP CON
134.45 284.0

TAKEOFF MINIMUMS:

Rwy 14, 32: NA - Environmental.
Rwy: 8, 26: Standard with minimum climb
of 500' per NM to 540.

**TOP ALTITUDE:
ASSIGNED BY ATC**



- NOTE: DME/DME/IRU or GPS required.
- NOTE: RADAR required.
- NOTE: RNAV 1.
- NOTE: CRGR TRANSITION ATC assigned only for aircraft departing 54T, AXH, EFD, GLS, HPY, IWS, LBX, LVJ, SGR, TME, T00, T41.

(NARRATIVE ON FOLLOWING PAGE)

NOTE: Chart not to scale.

SC-5, 10 OCT 2019 to 07 NOV 2019

BORRN FOUR DEPARTURE (RNAV)