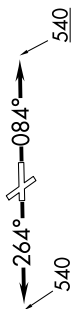


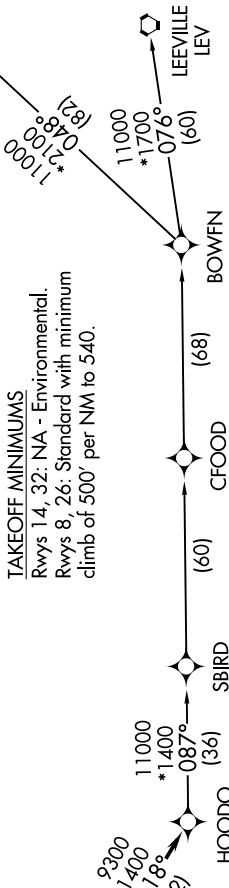
HOODO SIX DEPARTURE (RNAV)

SC-5, 10 OCT 2019 to 07 NOV 2019

CTAF
122.7
HOUSTON DEP CON
134.45 284.0



- NOTE: RNAV 1.
- NOTE: RADAR required.
- NOTE: ATC assigned only.
- NOTE: DME/DME/IRU or GPS required.
- NOTE: For non-GPS equipped aircraft, LCH, ILA, TBD, and LEV DME's must be operational.



TAKEOFF MINIMUMS
 Rwy's 14, 32: NA - Environmental.
 Rwy's 8, 26: Standard with minimum
 climb of 500' per NM to 540.

**TOP ALTITUDE:
ASSIGNED BY ATC**

NOTE: Chart not to scale.

DEPARTURE ROUTE DESCRIPTION

TAKEOFF RUNWAY 8: Climb heading 084° to 540, for RADAR vectors to VUH VOR/DME, thence

TAKEOFF RUNWAY 26: Climb heading 264° to 540, for RADAR vectors to VUH VOR/DME, thence

. on track 118° to HOODO, then on (transition). Maintain ATC assigned altitude.
 Expect filed altitude 10 minutes after departure.

- BOWFN TRANSITION (HOODO6.BOWFN)
- CFOOD TRANSITION (HOODO6.CFOOD)
- HARVEY TRANSITION (HOODO6.HRV)
- LEEVILLE TRANSITION (HOODO6.LEV)
- SBIRD TRANSITION (HOODO6.SBIRD)

SC-5, 10 OCT 2019 to 07 NOV 2019