

(INDIE7.INDIE) 19115

AL-6674 (FAA)

RWJ AIRPARK (54T)  
BAYTOWN, TEXAS

# INDIE SEVEN DEPARTURE (RNAV)

HOUSTON DEP CON  
134.45 284.0  
CTAF  
122.7

**TOP ALTITUDE:  
ASSIGNED BY ATC**

### TAKEOFF MINIMUMS

Rwy 14, 32: NA - Environmental.

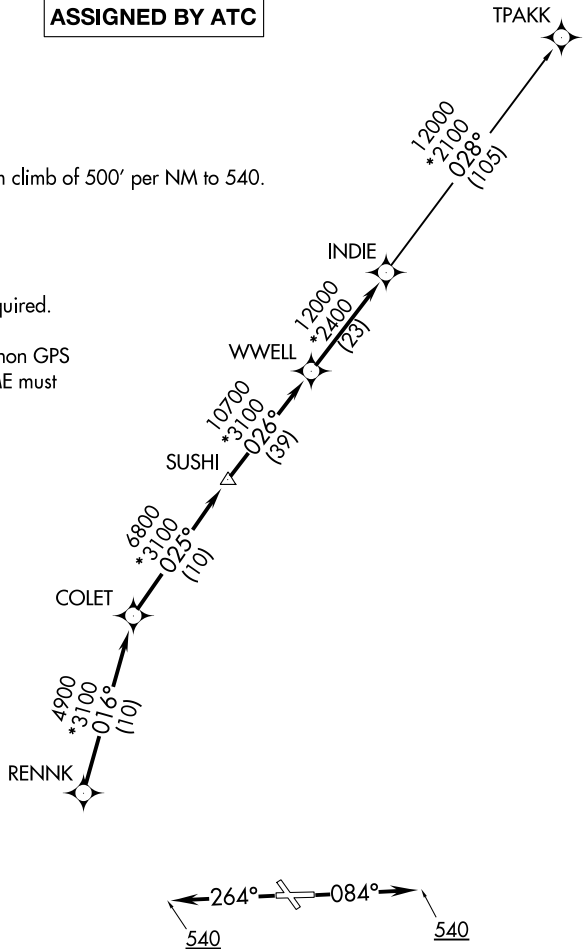
Rwy 8, 26: Standard with minimum climb of 500' per NM to 540.

NOTE: RADAR required.

NOTE: DME/DME/IRU or GPS required.

NOTE: RNAV 1.

NOTE: TPAKK TRANSITION: For non GPS equipped aircraft TNV DME must be operational.



NOTE: Chart not to scale.



### DEPARTURE ROUTE DESCRIPTION

TAKEOFF RWY 8: Climb heading 084° to 540 for RADAR vectors to RENNK, thence . . .

TAKEOFF RWY 26: Climb heading 264° to 540 for RADAR vectors to RENNK, thence . . .

. . . on track 016° to COLET, then on track 025° to SUSHI, then on track 026° to WWELL, then on track 026° to INDIE, then on (transition). Maintain ATC assigned altitude. Expect filed altitude 10 minutes after departure.

TPAKK TRANSITION (INDIE7.TPAKK)

INDIE SEVEN DEPARTURE (RNAV)  
(INDIE7.INDIE) 25APR19

BAYTOWN, TEXAS  
RWJ AIRPARK (54T)

SC-5, 10 OCT 2019 to 07 NOV 2019

SC-5, 10 OCT 2019 to 07 NOV 2019