

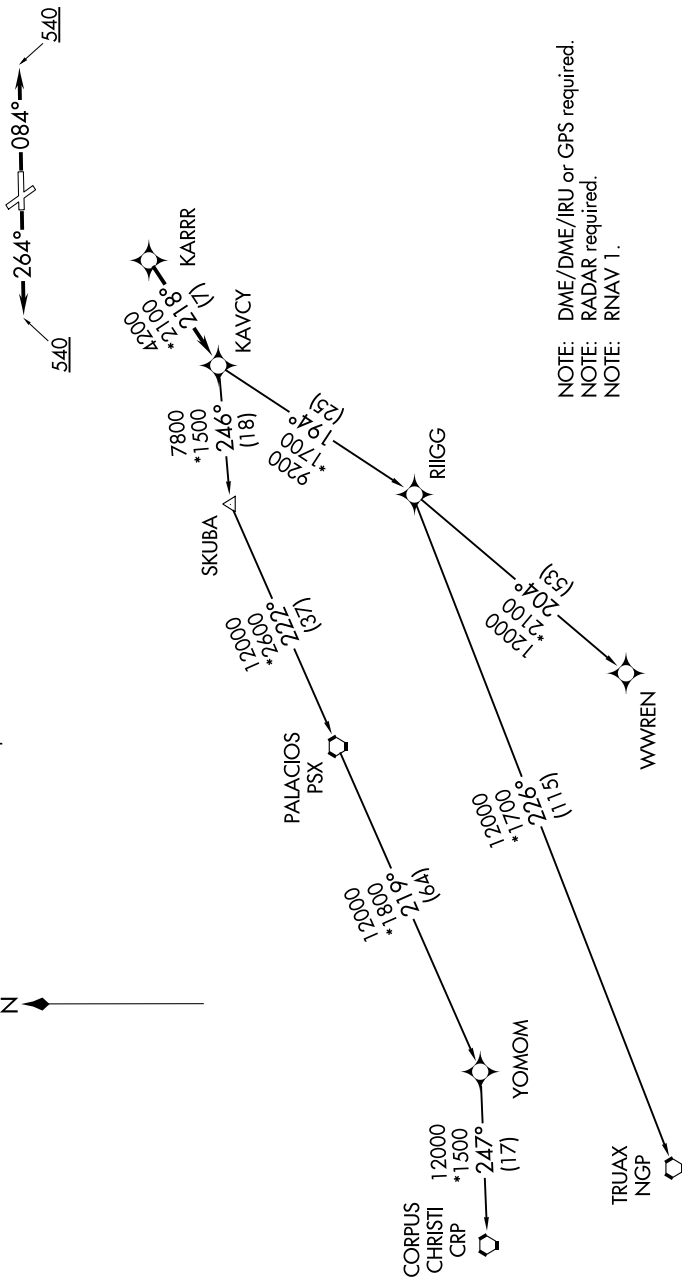
KARRR FIVE DEPARTURE (RNAV)

**TOP ALTITUDE:
ASSIGNED BY ATC**

TAKEOFF MINIMUMS

Rwy 14, 32 - ICA environmental.
Rwy 8, 26: Standard with minimum
climb of 500' per NM to 540.

CTAF
122.7
HOUSTON DEP CON
134.45 284.0



NOTE: DME/DME/IRU or GPS required.
NOTE: RADAR required.
NOTE: RNAV 1.

(NARRATIVE ON FOLLOWING PAGE)

NOTE: Chart not to scale.

KARRR FIVE DEPARTURE (RNAV)

(KARRR5.KARRR) 25APR19