

(LURIC7.LURIC) 19115

AL-6674 (FAA)

RWJ AIRPARK (54T)

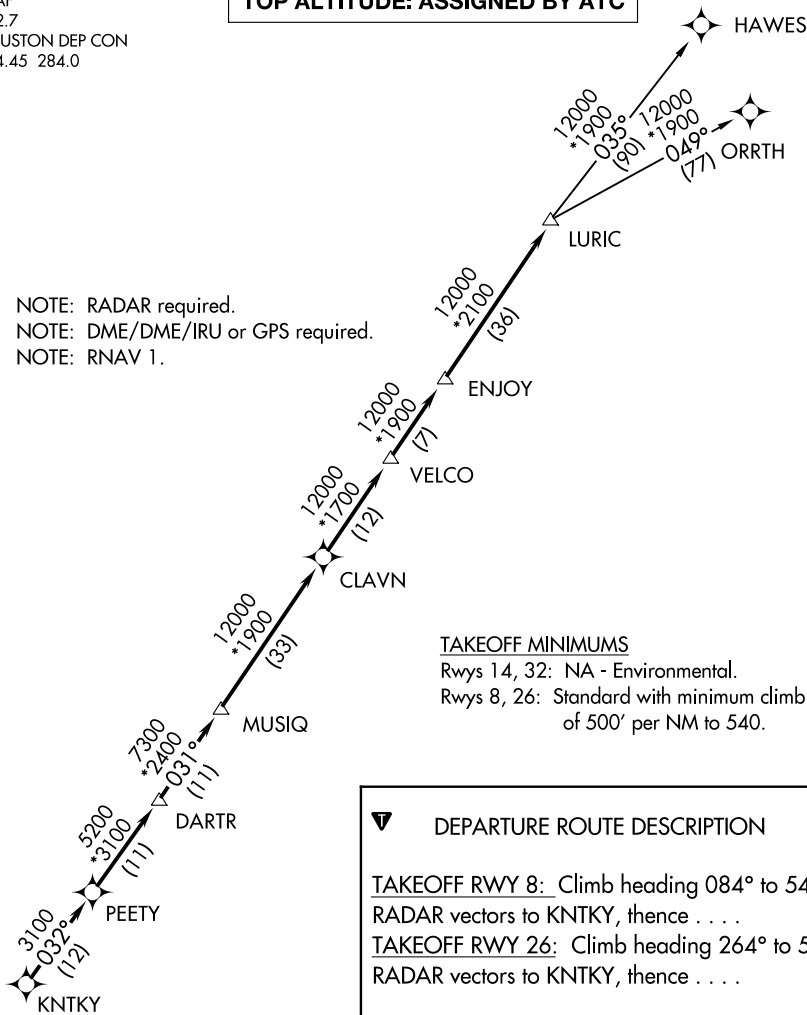
# LURIC SEVEN DEPARTURE (RNAV)

BAYTOWN, TEXAS

CTAF  
122.7  
HOUSTON DEP CON  
134.45 284.0

**TOP ALTITUDE: ASSIGNED BY ATC**

NOTE: RADAR required.  
NOTE: DME/DME/IRU or GPS required.  
NOTE: RNAV 1.



### TAKEOFF MINIMUMS

Rwys 14, 32: NA - Environmental.  
Rwys 8, 26: Standard with minimum climb of 500' per NM to 540.

**DEPARTURE ROUTE DESCRIPTION**

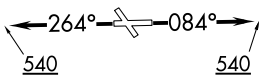
TAKEOFF RWY 8: Climb heading 084° to 540 for RADAR vectors to KNTKY, thence . . . .

TAKEOFF RWY 26: Climb heading 264° to 540 for RADAR vectors to KNTKY, thence . . . .

. . . . on track 032° to PEETY, then on track 032° to DARTR, then on track 031° to MUSIQ, then on track 031° to CLAVN, then on track 031° to VELCO, then on track 031° to ENJOY, then on track 031° to LURIC, then on (transition). Maintain ATC assigned altitude. Expect filed altitude 10 minutes after departure.

HAWES TRANSITION (LURIC7.HAWES)

ORRTH TRANSITION (LURIC7.ORRTH)



NOTE: Chart not to scale.

# LURIC SEVEN DEPARTURE (RNAV)

(LURIC7.LURIC) 25APR19

BAYTOWN, TEXAS

RWJ AIRPARK (54T)

SC-5, 10 OCT 2019 to 07 NOV 2019

SC-5, 10 OCT 2019 to 07 NOV 2019