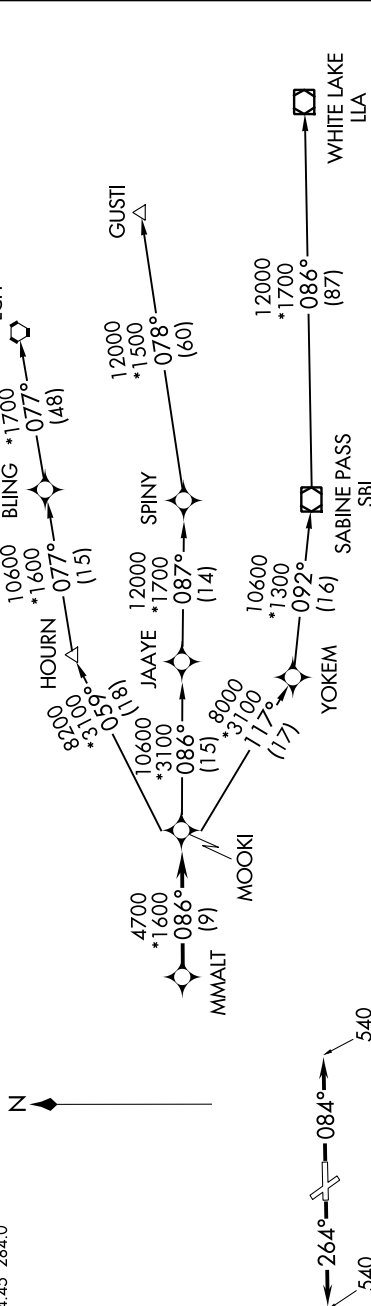


MMALT FIVE DEPARTURE (RNAV)

SC-5, 10 OCT 2019 to 07 NOV 2019

CTAF
122.7
HOUSTON DEP CON
134.45 284.0

**TOP ALTITUDE:
ASSIGNED BY ATC**



TAKEOFF MINIMUMS

Rwy 14, 32: NA - environmental.
Rwy 8, 26: Standard with minimum climb of 500' per NM to 540.

NOTE: DME/DME/IRU or GPS required.
NOTE: RADAR required.
NOTE: RNAV 1.

NOTE: GUSTI and LCH TRANSITIONS
ATC assigned only for aircraft
departing AXH, EFD, GLS, HPY,
IWS, LBX, LVJ, SGR, TME, T00,
T41 and 54T.

NOTE: Chart not to scale.

DEPARTURE ROUTE DESCRIPTION

TAKEOFF RWY 8: Climb on heading 084° to 540 for RADAR vectors to MMALT, thence. . . .
TAKEOFF RWY 26: Climb on heading 264° to 540 for RADAR vectors to MMALT, thence. . . .

. . . on track 086° to MOOKI, then on (transition). Maintain ATC assigned altitude.
Expect filed altitude 10 minutes after departure.

GUSTI TRANSITION (MMALT5.GUSTI)
LAKE CHARLES TRANSITION (MMALT5.LCH)
WHITE LAKE TRANSITION (MMALT5.LLA)

SC-5, 10 OCT 2019 to 07 NOV 2019