

STRYA SEVEN DEPARTURE (RNAV)

TOP ALTITUDE: ASSIGNED BY ATC

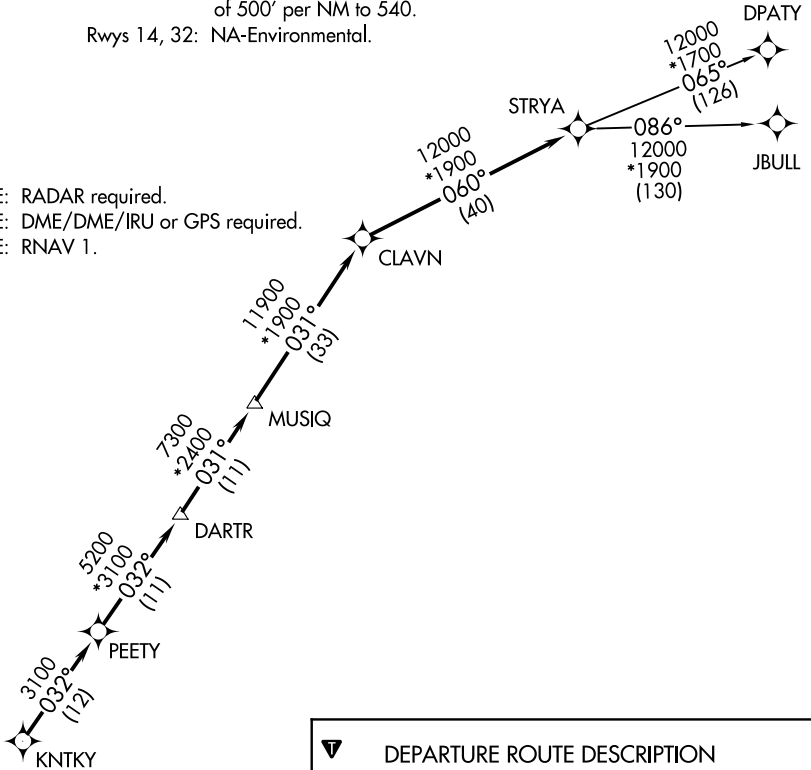
CTAF
122.7
HOUSTON DEP CON
134.45 284.0

TAKEOFF MINIMUMS

Rwys 8, 26: Standard with minimum climb
of 500' per NM to 540.

Rwys 14, 32: NA-Environmental.

- NOTE: RADAR required.
- NOTE: DME/DME/IRU or GPS required.
- NOTE: RNAV 1.



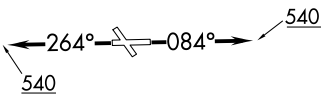
DEPARTURE ROUTE DESCRIPTION

TAKEOFF RWY 8: Climb heading 084° to 540 for RADAR vectors to KNTKY, thence

TAKEOFF RWY 26: Climb heading 264° to 540 for RADAR vectors to KNTKY, thence

. . . . on track 032° to PEETY, then on track 032° to DARTR, then on track 031° to MUSIQ, then on track 031° to CLAVN, then on track 060° to STRYA, then on (transition). Maintain ATC assigned altitude. Expect filed altitude 10 minutes after departure.

- DPATY TRANSITION (STRYA7.DPATY)
- JBULL TRANSITION (STRYA7.JBULL)



NOTE: Chart not to scale.

SC-5, 10 OCT 2019 to 07 NOV 2019

SC-5, 10 OCT 2019 to 07 NOV 2019