

(STYCK7.STYCK) 19115

AL-6674 (FAA)

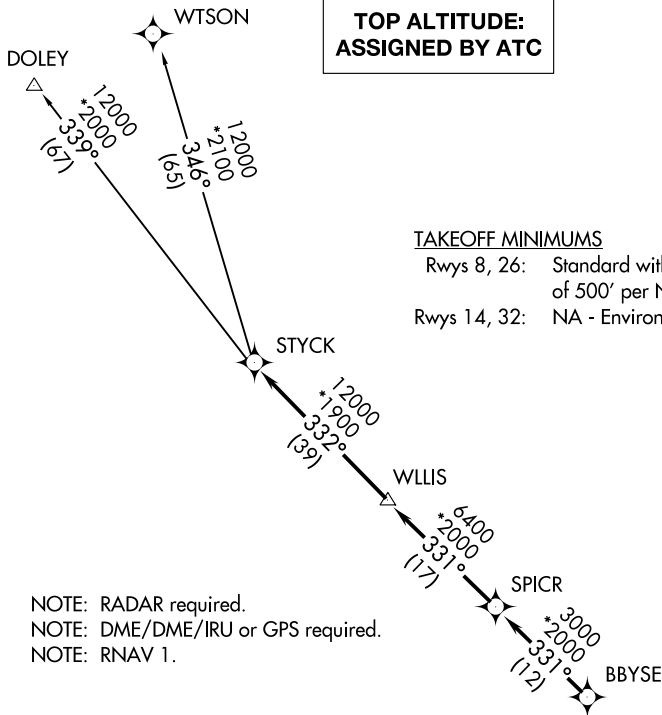
RWJ AIRPARK (54T)

STYCK SEVEN DEPARTURE (RNAV)

BAYTOWN, TEXAS

**TOP ALTITUDE:
ASSIGNED BY ATC**

CTAF
122.7
HOUSTON DEP CON
134.45 284.0



TAKEOFF MINIMUMS

Rwys 8, 26: Standard with minimum climb of 500' per NM to 540.
Rwys 14, 32: NA - Environmental.

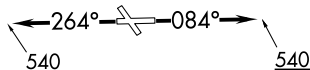
NOTE: RADAR required.
NOTE: DME/DME/IRU or GPS required.
NOTE: RNAV 1.

DEPARTURE ROUTE DESCRIPTION

TAKEOFF RWY 8: Climb heading 084° to 540 for RADAR vectors to BBYSE, thence. . . .
TAKEOFF RWY 26: Climb heading 264° to 540 for RADAR vectors to BBYSE, thence. . . .

. . . .on track 331° to SPICR, then on track 331° to WLLIS, then on track 332° to STYCK, then on (transition). Maintain ATC assigned altitude. Expect filed altitude 10 minutes after departure.

DOLEY TRANSITION (STYCK7.DOLEY)
WTSON TRANSITION (STYCK7.WTSON)



NOTE: Chart not to scale.

STYCK SEVEN DEPARTURE (RNAV)

(STYCK7.STYCK) 25APR19

BAYTOWN, TEXAS

RWJ AIRPARK (54T)

SC-5, 10 OCT 2019 to 07 NOV 2019

SC-5, 10 OCT 2019 to 07 NOV 2019