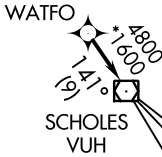
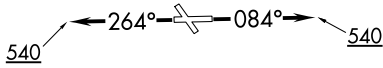


WATFO FIVE DEPARTURE (RNAV)

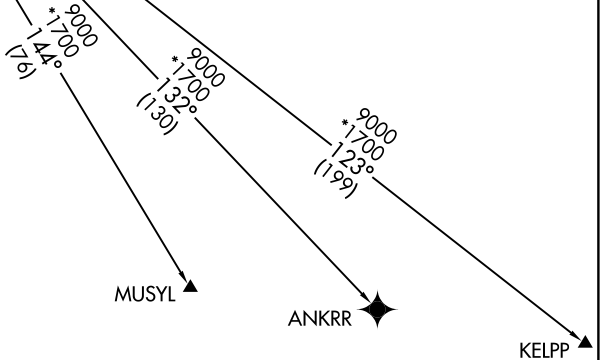
**TOP ALTITUDE:
ASSIGNED BY ATC**

CTAF
122.7
HOUSTON DEP CON
134.45 284.0



TAKEOFF MINIMUMS:
 Rwy 14, 32: NA - environmental.
 Rwy 8, 26: Standard with minimum climb
 of 500' per NM to 540.

NOTE: GPS required.
 NOTE: RADAR required.
 NOTE: RNAV 1.



NOTE: Chart not to scale.



DEPARTURE ROUTE DESCRIPTION

TAKEOFF RWY 8: Climb on heading 084° to 540, for RADAR vectors to WATFO, thence. . . .
TAKEOFF RWY 26: Climb on heading 264° to 540, for RADAR vectors to WATFO, thence. . . .
 . . . on track 141° to VUH VOR/DME, then on (transition). Maintain ATC assigned altitude.
 Expect filed altitude 10 minutes after departure.

ANKRR TRANSITION (WATFO5.ANKRR)
KELPP TRANSITION (WATFO5.KELPP)
MUSYL TRANSITION (WATFO5.MUSYL)

SC-5, 10 OCT 2019 to 07 NOV 2019

SC-5, 10 OCT 2019 to 07 NOV 2019