

# WYLSN SEVEN DEPARTURE (RNAV)

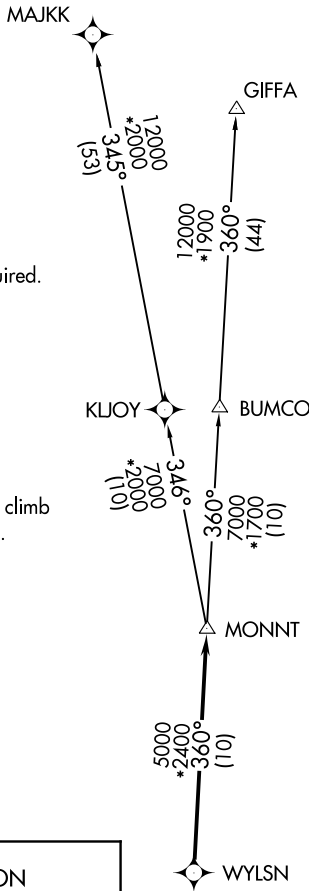
CTAF  
122.7  
HOUSTON DEP CON  
134.45 284.0

**TOP ALTITUDE:  
ASSIGNED BY ATC**

NOTE: RADAR required.  
NOTE: DME/DME/IRU or GPS required.  
NOTE: RNAV 1.

### TAKEOFF MINIMUMS

Rwy 8, 26: Standard with minimum climb  
of 500' per NM to 540.  
Rwy 14, 32: NA - Environmental.



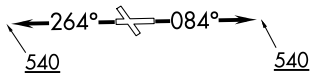
### DEPARTURE ROUTE DESCRIPTION

TAKEOFF RWY 8: Climb on heading 084° to 540 for RADAR vectors to WYLSN, thence. . . .

TAKEOFF RWY 26: Climb on heading 264° to 540 for RADAR vectors to WYLSN, thence. . . .

. . . .on track 360° to MONNT, then on (transition). Maintain ATC assigned altitude. Expect filed altitude 10 minutes after departure.

GIFFA TRANSITION (WYLSN7.GIFFA)  
MAJJK TRANSITION (WYLSN7.MAJKK)



NOTE: Chart not to scale.

# WYLSN SEVEN DEPARTURE (RNAV)

SC-5, 10 OCT 2019 to 07 NOV 2019

SC-5, 10 OCT 2019 to 07 NOV 2019