

RNAV (GPS) RWY 9

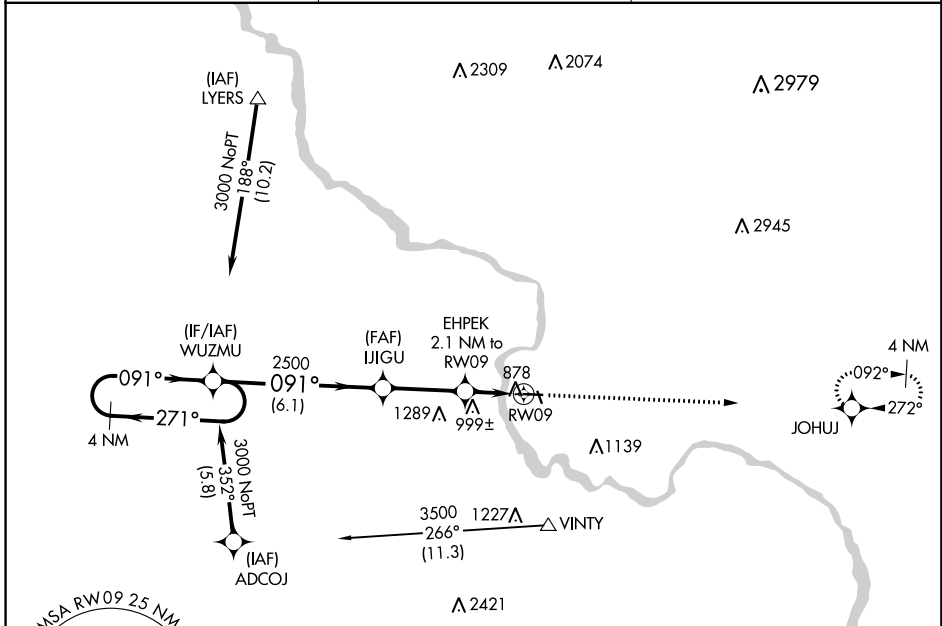
VINTON VETERANS MEMORIAL AIRPARK (VTI)

APP CRS 091°	Rwy Idg 4000
	TDZE 836
	Apt Elev 842

⚠ When VGSI inoperative, Straight-in/Circling Rwy 9 procedure NA at night.
⚠ DME/DME RNP-0.3 NA. Visibility reduction by helicopters NA. When local altimeter setting not received, use Independence altimeter setting and increase all MDA 60 feet.

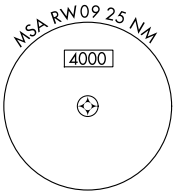
MISSED APPROACH: Climb to 3000 direct JOHUJ and hold.

AWOS-3 120.075	CEDAR RAPIDS APP CON * 134.05 266.8	UNICOM 122.8 (CTAF) 0
--------------------------	---	---------------------------------

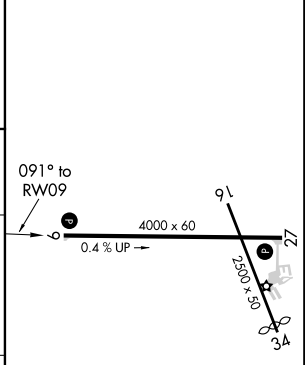
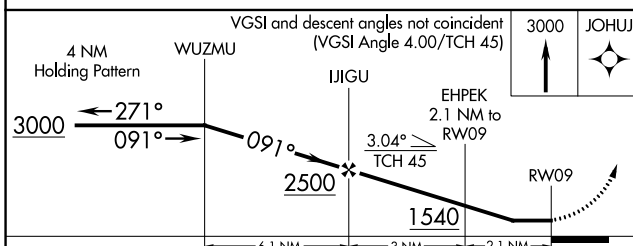


NC-3, 10 OCT 2019 to 07 NOV 2019

NC-3, 10 OCT 2019 to 07 NOV 2019



ELEV 842	TDZE 836
----------	----------



CATEGORY	A	B	C	D
LNVA MDA	1260-1	424 (500-1)		NA
CIRCLING	1320-1	478 (500-1)		NA

REIL Rwy 9 and 27 0
 MIRL Rwy 9-27 0