

WAAS CH 63040 W27A	APP CRS 275°	Rwy Idg TDZE Apt Elev	5540 7415 7415
---------------------------------	------------------------	-----------------------------	---

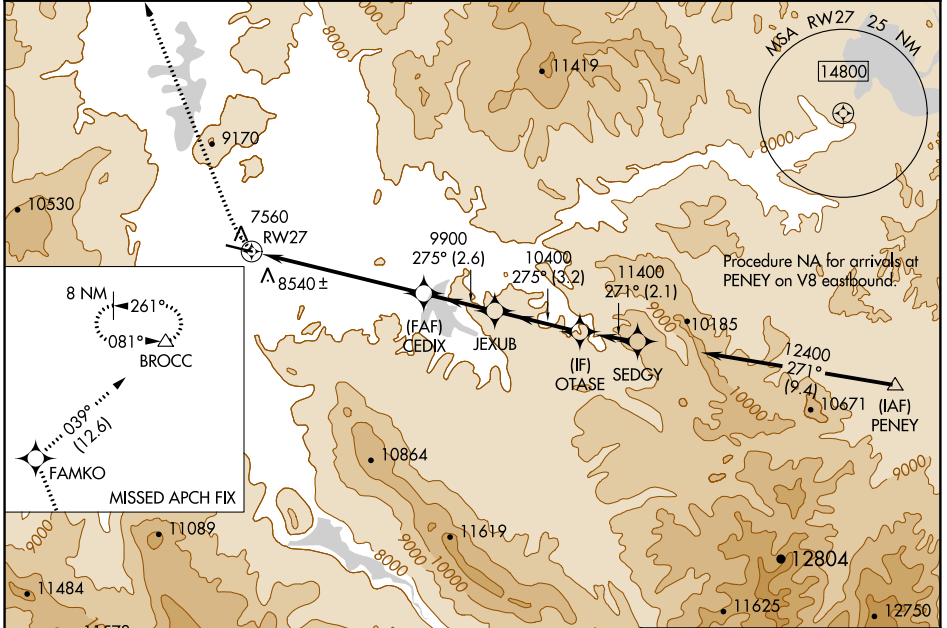
RNAV (GPS) RWY 27

MC ELROY AIRFIELD (20V)

⚠ Circling NA at night. For uncompensated Baro-VNAV systems, LNAV/VNAV NA below -29°C (-21°F) or above 33°C (91°F).
⚠ Circling NA south of Rwy 9-27. DME/DME RNP-0.3 NA.
⚠ Rwy 27 helicopter visibility reduction below ¼ SM NA.

MISSED APPROACH: Climbing right turn to 13400 direct FAMKO and on track 039° to BROCC and hold. # Missed approach requires minimum climb of 405 feet per NM to 10000.

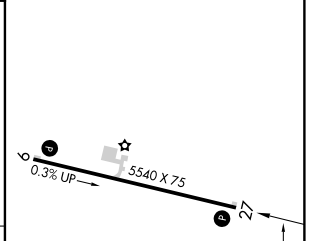
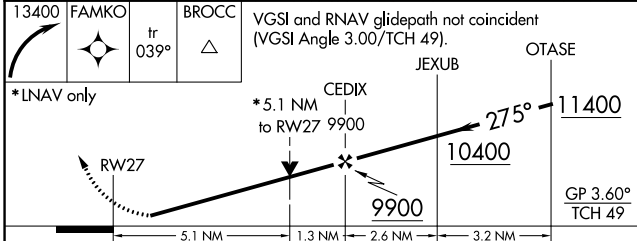
AWOS-3 118.425	DENVER CENTER 128.65 282.2	UNICOM 122.8 (CTAF) ①
--------------------------	--------------------------------------	--



SW-1, 10 OCT 2019 to 07 NOV 2019

SW-1, 10 OCT 2019 to 07 NOV 2019

ELEV 7415	TDZE 7415
------------------	------------------



CATEGORY	A	B	C	D
LPV DA #	8111-2	696 (700-2)		NA
LPV DA	9045-5	1630 (1700-5)		NA
LNAV/VNAV DA	8784-4	1369 (1400-4)		NA
LNAV MDA	9100-1¼ 1685 (1700-1¼)	9100-1½ 1685 (1700-1½)	9100-3 1685 (1700-3)	NA
C CIRCLING	9180-1¼ 1765 (1800-1¼)	9180-1½ 1765 (1800-1½)	9180-3 1765 (1800-3)	NA

REIL Rwy 9 and 27 **①**
 MIRL Rwy 9-27 **①**