

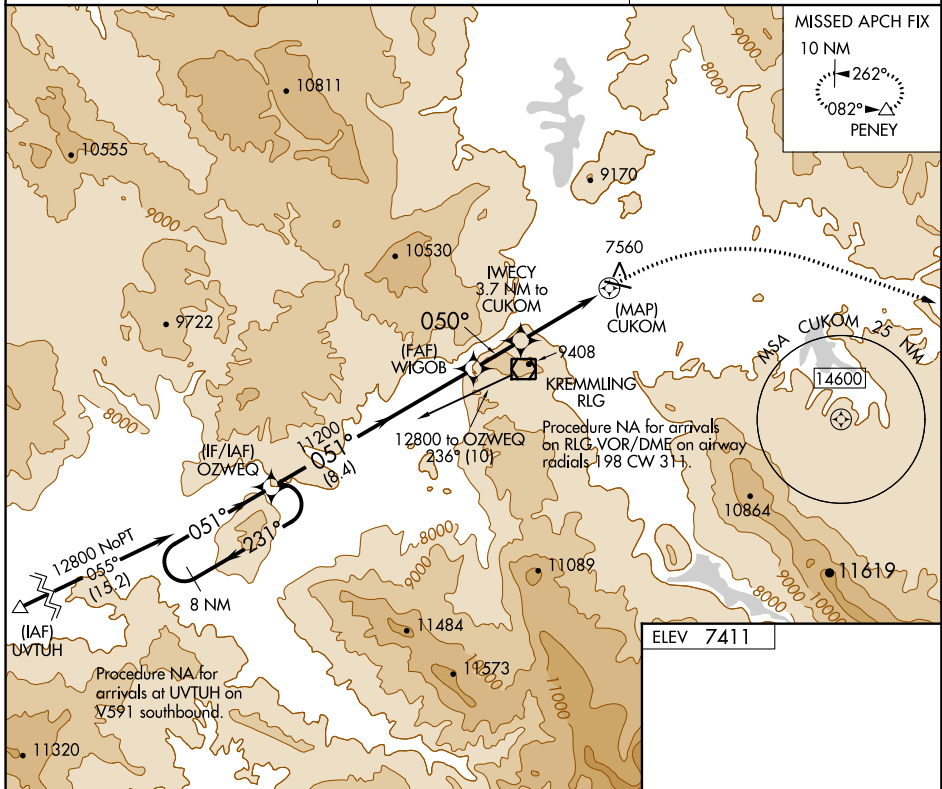
APP CRS	Rwy Idg	N/A
050°	TDZE	N/A
	Apt Elev	7411

RNAV (GPS)-B

MC ELROY AIRFIELD (20V)

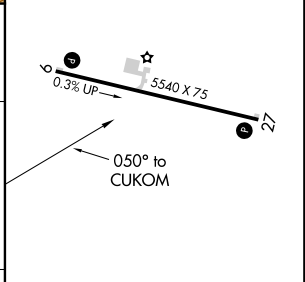
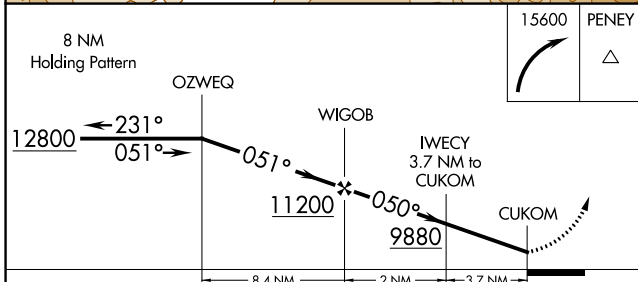
RNP APCH.	MISSED APPROACH: Climbing right turn to 15600 direct PENEY and hold, continue climb-in-hold to 15600.
When local altimeter setting not received, procedure NA. Night Landing Rwy 9 NA. Circling NA south of Rwy 9-27. -21°C	

AWOS-3 118.425	DENVER CENTER 128.65 282.2	UNICOM 122.8 (CTAF)
--------------------------	--------------------------------------	-------------------------------



SW-1, 10 OCT 2019 to 07 NOV 2019

SW-1, 10 OCT 2019 to 07 NOV 2019



CATEGORY	A	B	C	D
CIRCLING	9440-1¼ 2029 (2100-1¼)	9440-1½ 2029 (2100-1½)	9440-3 2029 (2100-3)	NA

REIL Rwys 9 and 27
MIRL Rwy 9-27