

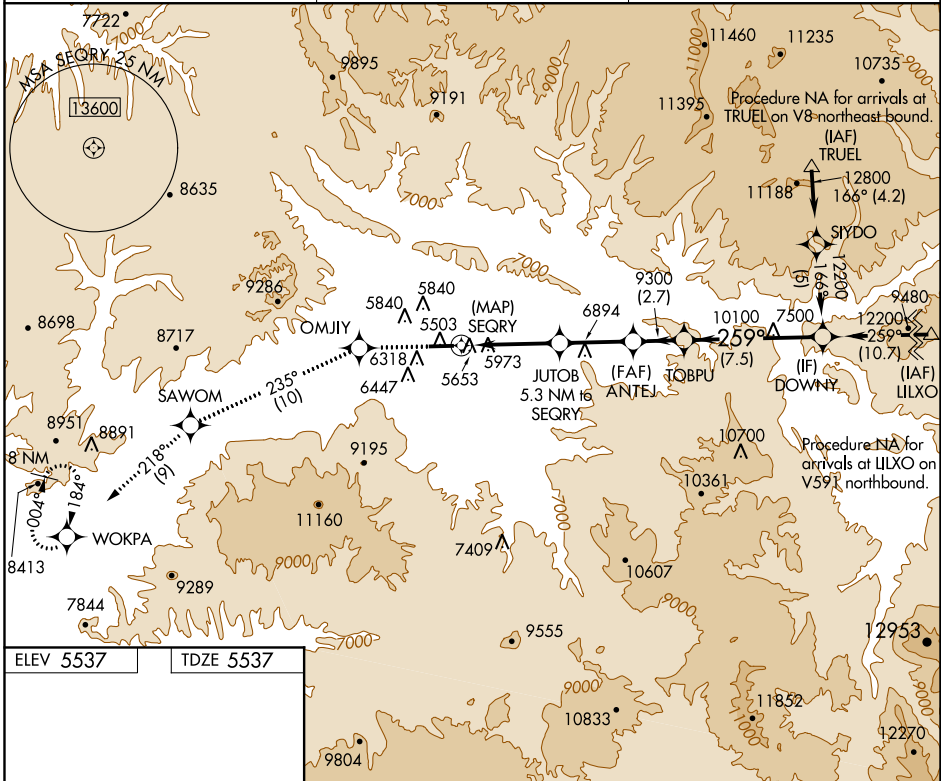
APP CRS	Rwy Idg	7000
259°	TDZE	5537
	Apt Elev	5537

RNAV (GPS) W RWY 26

RIFLE GARFIELD COUNTY (R.I.L.)

▼ ▲ ⊗ -15°C	DME/DME RNP-0.3 NA. Visibility reduction by helicopters NA. Circling not authorized at night south of Rwy 8-26. Inoperative table does not apply.	ODALS ⊗	MISSED APPROACH: Climb to 13000 direct OMJIY and on track 235° to SAWOM and on track 218° to WOKPA and hold, continue climb-in-hold to 13000.
--	---	--------------------------	---

ASOS 135.275	DENVER CENTER 134.95 327.075	UNICOM 122.8 (CTAF) 📻
------------------------	--	--



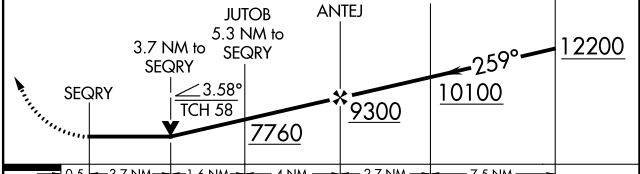
SW-1, 10 OCT 2019 to 07 NOV 2019

SW-1, 10 OCT 2019 to 07 NOV 2019

ELEV 5537	TDZE 5537
-----------	-----------

HIRL Rwy 8-26 **📻**
REIL Rwy 8 and 26 **📻**

13000	OMJIY	tr 235°	SAWOM	tr 218°	WOKPA	TOBPU	DOWNNY
-------	-------	---------	-------	---------	-------	-------	--------



	0.5	3.7 NM	1.6 NM	4 NM	2.7 NM	7.5 NM
CATEGORY	A	B	C	D		
LNAV MDA	7180-1¼ 1643 (1700-1¼)	7180-1½ 1643 (1700-1½)	7180-3 1643 (1700-3)	NA		
CIRCLING	7180-1¼ 1643 (1700-1¼)	7180-1½ 1643 (1700-1½)	7180-3 1643 (1700-3)	NA		