

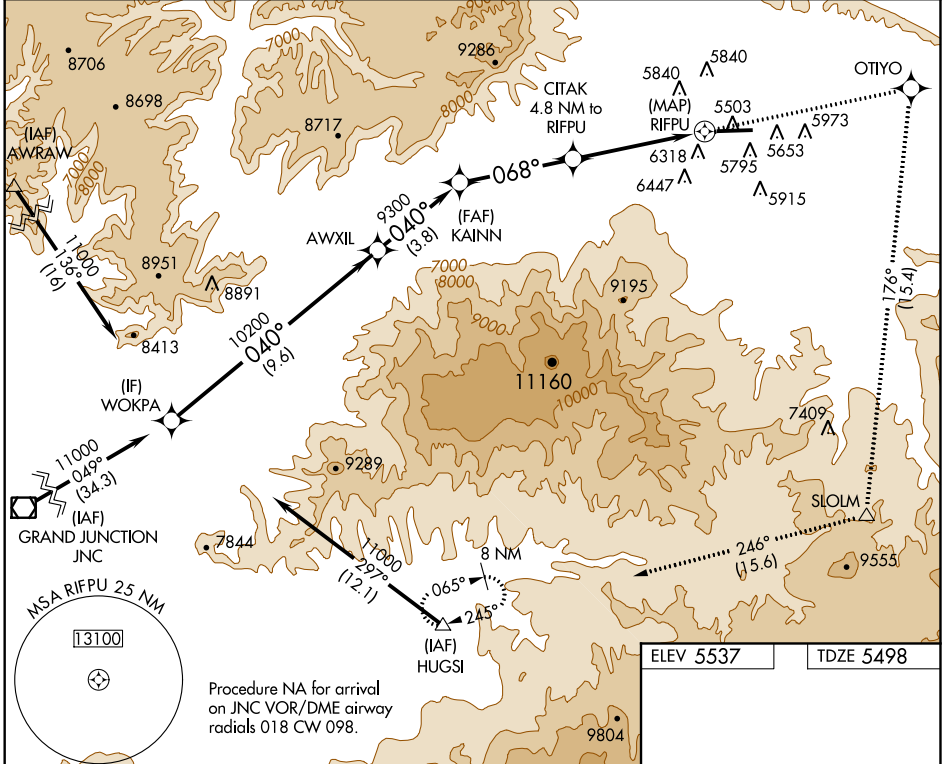
APP CRS	Rwy Idg	7000
068°	TDZE	5498
	Apt Elev	5537

RNAV (GPS) Y RWY 8

RIFLE GARFIELD COUNTY (RIL)

<p>DME/DME RNP-0.3 NA. Visibility reduction by helicopters NA. -15°C Circling NA at night south of Rwy 8-26.</p>	<p>MISSED APPROACH: Climb to 13000 direct OTIYO and right turn on track 176° to SLOLM and on track 246° to HUGSI and hold, continue climb-in-hold to 13000.</p>
---	---

ASOS 135.275	DENVER CENTER 134.95 327.075	UNICOM 122.8 (CTAF)
------------------------	--	-------------------------------

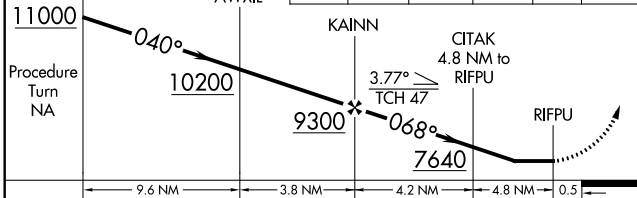


SW-1, 10 OCT 2019 to 07 NOV 2019

SW-1, 10 OCT 2019 to 07 NOV 2019

ELEV 5537	TDZE 5498
-----------	-----------

<p>VGSI and descent angles not coincident (VGSI Angle 3.00/TCH 47).</p>						
---	--	--	--	--	--	--



<p>HIRL Rwy 8-26</p>	<p>REIL Rwy 8 and 26</p>
----------------------	--------------------------

CATEGORY	A	B	C	D
LNVA MDA	7420-1¼ 1922 (1900-1¼)	7420-1½ 1922 (1900-1½)	7420-3 1922 (1900-3)	NA
CIRCLING	7420-1¼ 1883 (1900-1¼)	7420-1½ 1883 (1900-1½)	7420-3 1883 (1900-3)	NA