

APP CRS 146°	Rwy Idg 3252
	TDZE 391
	Apt Elev 391

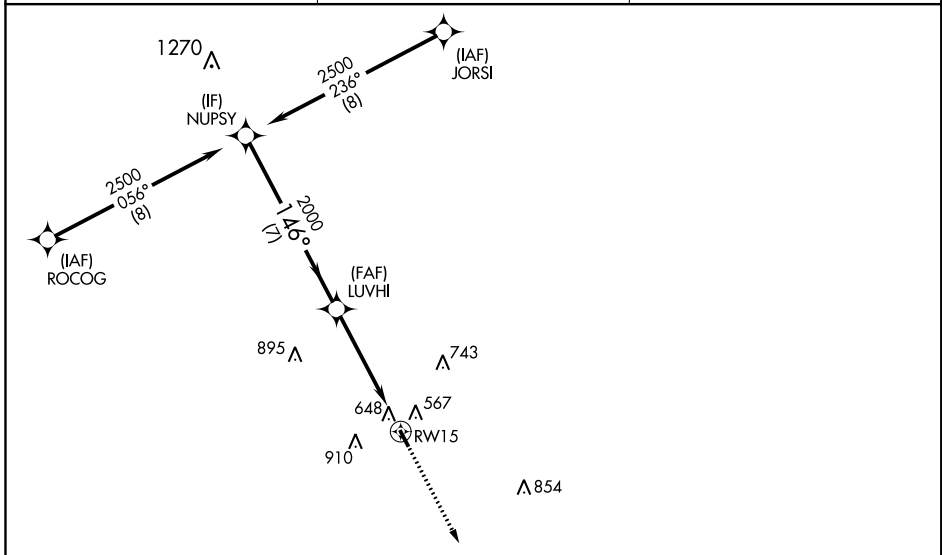
RNAV (GPS) RWY 15

CALDWELL MUNI (RWV)

⚠ When local altimeter setting not received, use College Station altimeter setting and increase all MDA 60 feet. Circling NA east of Rwy 15-33. DME/DME RNP-0.3 NA. Procedure NA at night. Helicopter visibility reduction below 1 SM NA.

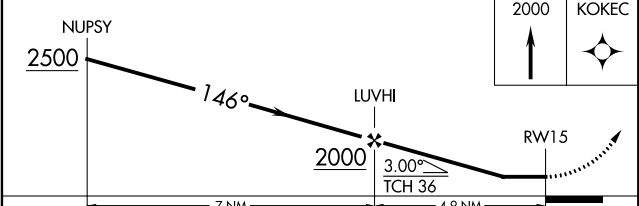
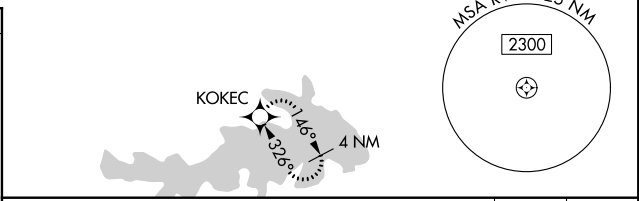
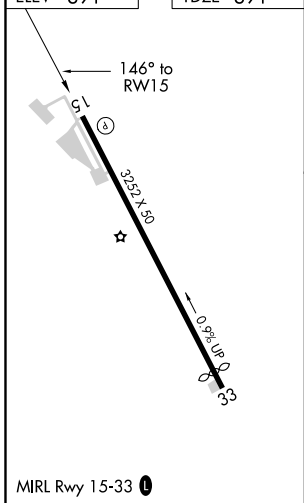
MISSED APPROACH: Climb to 2000 direct KOKEC and hold.

AWOS-3 118.35	HOUSTON APP CON 134.3 360.85	CTAF 122.9
-------------------------	--	----------------------



RADAR REQUIRED

ELEV 391	TDZE 391
----------	----------



CATEGORY	A	B	C	D
LNAV MDA	960-1	569 (600-1)	NA	
CIRCLING	1000-1	609 (700-1)	NA	