

LOC/DME I-JVW 108.55 Chan 22(Y)	APP CRS 124°	Rwy Idg 5499 TDZE 241 Apt Elev 247
--	------------------------	---

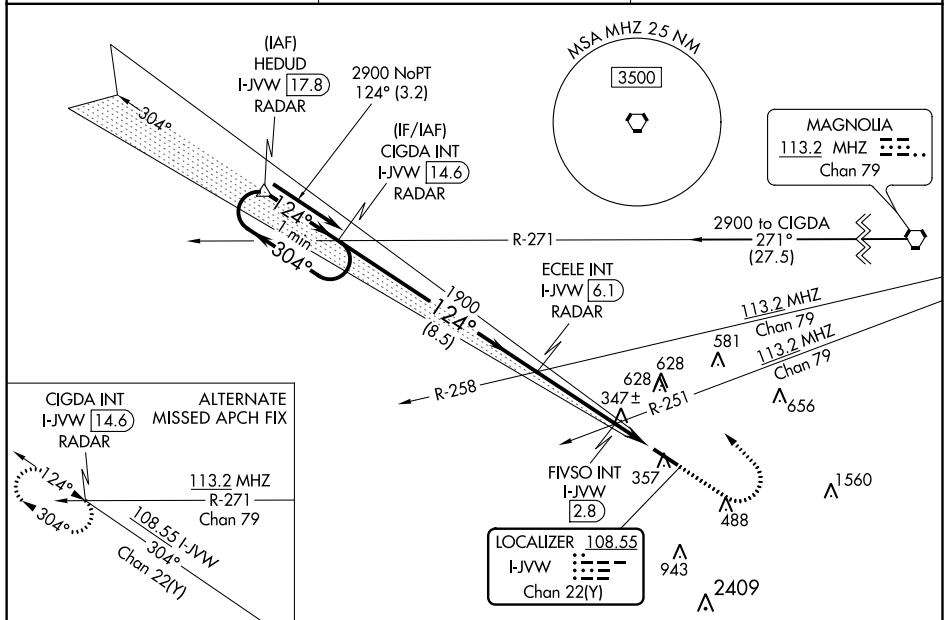
ILS or LOC RWY 12

JOHN BELL WILLIAMS (JVW)

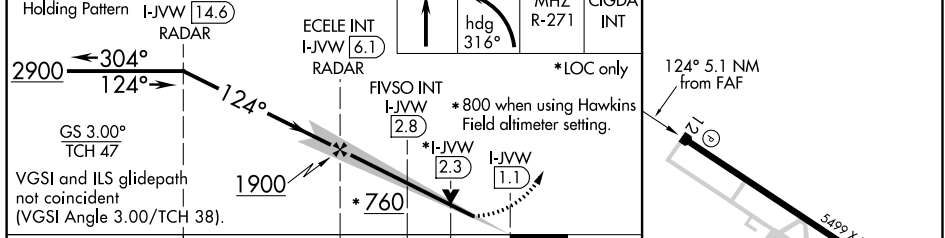
⚠ VDP NA with Hawkins Field altimeter setting. Circling NA for Cat D southwest of Rwy 12-30. When local altimeter setting not received, use Hawkins Field altimeter setting: increase all DA 36 feet, all MDA 40 feet, S-LOC 12 Cat C and D visibilities ¼ mile, and Circling Cat C and D visibilities ¼ mile, increase FIVSO fix minimums S-LOC 12 Cat C and D visibilities ¼ mile and Circling Cat C and D visibilities ¼ mile.

⚠ MISSED APPROACH: Climb to 800 then climbing left turn to 2900 on heading 316° and on MHz VORTAC R-271 to CIGDA INT/I-JVW 14.6 DME and hold.

AWOS-3PT 118.675	JACKSON APP CON ★ 125.25 319.2	UNICOM 123.0 (CTAF)
----------------------------	--	-------------------------------



One Minute Holding Pattern	CIGDA INT I-JVW 14.6 RADAR	ECELE INT I-JVW 6.1 RADAR	FIVSO INT I-JVW 2.8	I-JVW 1.1	ELEV 247	TDZE 241
----------------------------	----------------------------	---------------------------	---------------------	-----------	----------	----------



CATEGORY	A	B	C	D		
S-ILS 12	441- ³ / ₄ 200 (200- ³ / ₄)					
S-LOC 12	760-1	519 (600-1)	760- ¹ / ₈	519 (600- ¹ / ₈)		
C CIRCLING	800-1	553 (600-1)	733 (800-2)	733 (800-2 ¹ / ₄)		
FIVSO FIX MINIMUMS (DUAL VOR RECEIVERS OR DME REQUIRED)						
S-LOC 12	660-1	419 (500-1)	660- ¹ / ₈	419 (500- ¹ / ₈)		
C CIRCLING	800-1	553 (600-1)	980-2	980-2 ¹ / ₄		
MIRL Rwy 12-30 ⚠ REIL Rwy 12 and 30 ⚠						
FAF to MAP 5.1 NM						
Knots		60	90	120	150	180
Min:Sec		5:06	3:24	2:33	2:02	1:42

SC-4, 10 OCT 2019 to 07 NOV 2019

SC-4, 10 OCT 2019 to 07 NOV 2019