

APP CRS	Rwy Idg	<b>5000</b>
<b>138°</b>	TDZE	<b>988</b>
	Apt Elev	<b>989</b>

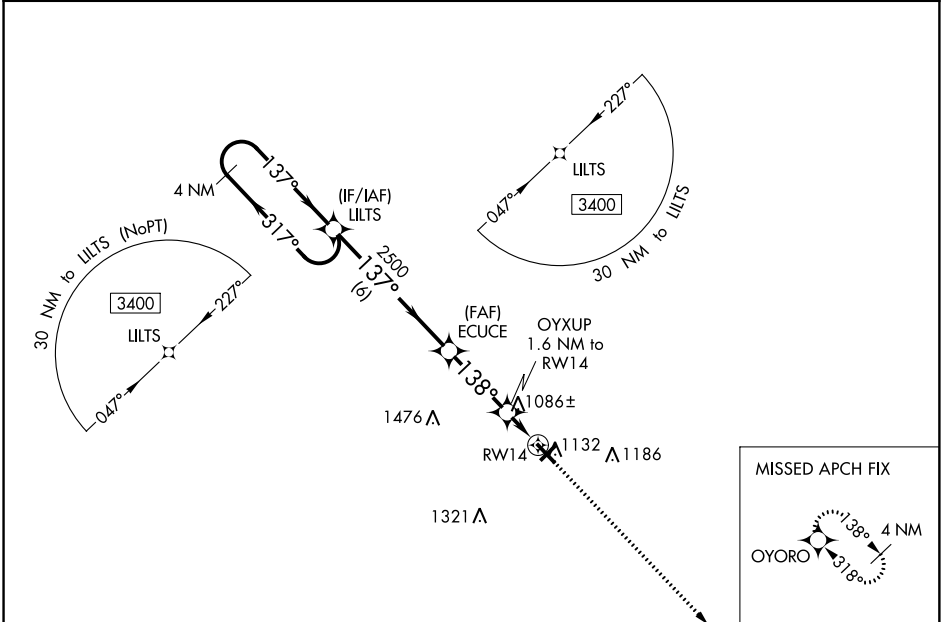
# RNAV (GPS) RWY 14

BURNETT COUNTY (RZN)

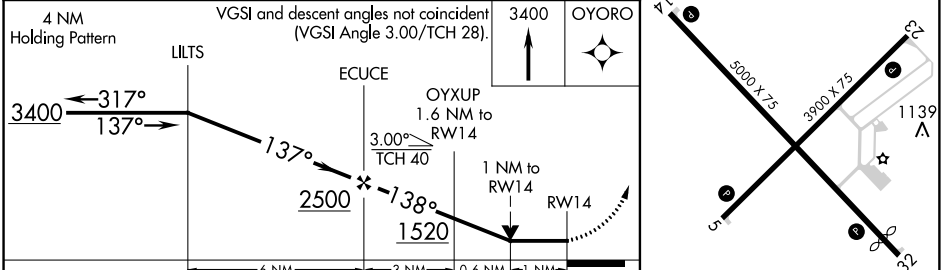
**▼** DME/DME RNP-0.3 NA. VDP NA with Rush City, MN altimeter setting.  
**▲** When local altimeter setting not received, use Rush City, MN altimeter setting and increase all MDA 80 feet; increase LNAV Cat C/D visibility and Circling Cat C/D visibility ¼ mile. Helicopter visibility reduction below ¾ SM NA. Night landing: Rwy 5, 23, 32 NA.

**MISSED APPROACH:** Climb to 3400 direct OYORO and hold.

AWOS-3 <b>118,325</b>	MINNEAPOLIS CENTER <b>121.05 397.9</b>	UNICOM <b>122.8</b> (CTAF) <b>📶</b>
--------------------------	---	--



4 NM Holding Pattern	VGSI and descent angles not coincident (VGSI Angle 3.00/TCH 28).	3400	OYORO
LILTS	ECUCE	OYUP	RWY 14
3400	2500	1520	1139
317°	137°	138°	138°
137°	3.00°	1.6 NM	1.1 NM
TCH 40	TCH 40	1.6 NM	1.1 NM
6 NM	3 NM	0.6 NM	1 NM



CATEGORY	A	B	C	D	
LNAV MDA	1340-1 352 (400-1)				
<b>📶</b> CIRCLING	1440-1	451 (500-1)	1540-1½ 551 (600-1½)	1680-2¼ 691 (700-2¼)	REIL Rwys 5, 14, 23 and 32 <b>📶</b> MIRL Rwys 5-23 and 14-32 <b>📶</b>

EC-3, 10 OCT 2019 to 07 NOV 2019

EC-3, 10 OCT 2019 to 07 NOV 2019