

APP CRS	Rwy Idg	3900
226°	TDZE	989
	Apt Elev	989

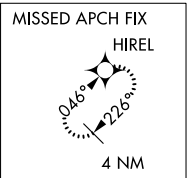
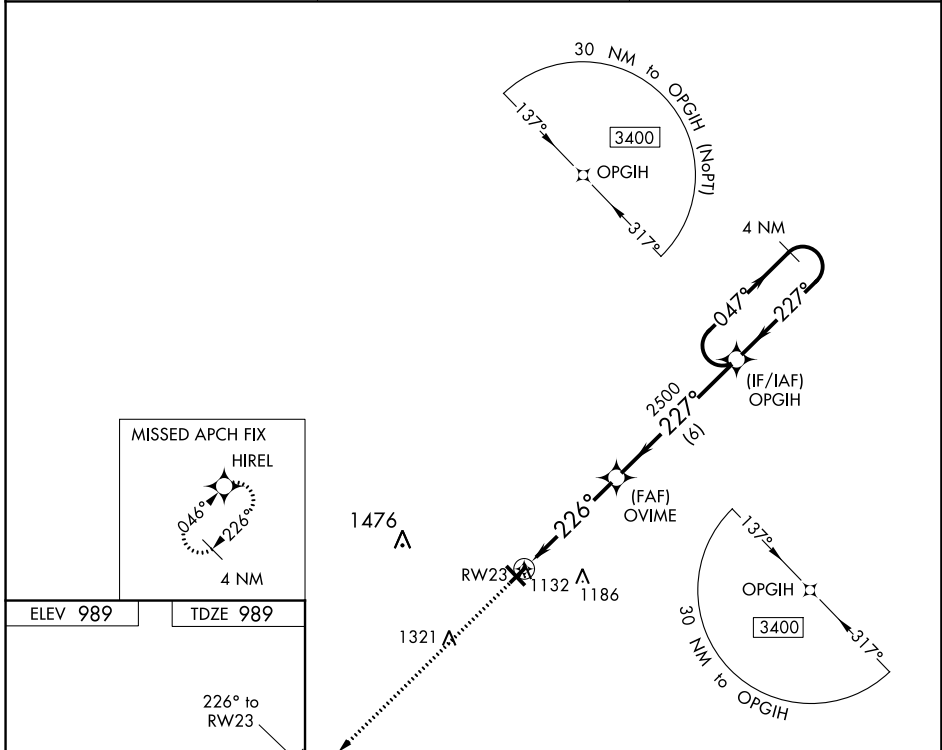
RNAV (GPS) RWY 23

BURNETT COUNTY (RZN)

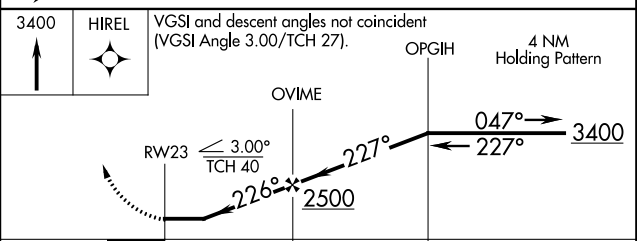
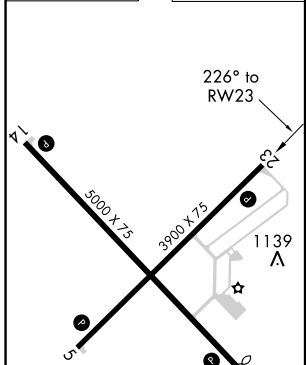
⚠ DME/DME RNP-0.3 NA. When local altimeter setting not received, use Rush City, MN altimeter setting and increase all MDA 80 feet; increase LNAV Cat C/D visibility 1/8 mile, and Circling Cat C/D visibility 1/4 mile. Helicopter visibility reduction below 1 SM NA. Night landing: Rwy 5, 23, 32, NA.

⚠ MISSED APPROACH: Climb to 3400 direct HIREL and hold.

AWOS-3 118.325	MINNEAPOLIS CENTER 121.05 397.9	UNICOM 122.8 (CTAF) 0
--------------------------	---	--



ELEV 989	TDZE 989
----------	----------



CATEGORY	A	B	C	D
LNAV MDA	1 440-1	451 (500-1)	1 440-1 ³ / ₈	451 (500-1 ³ / ₈)
C CIRCLING	1 440-1	451 (500-1)	1 540-1 ¹ / ₂ 551 (600-1 ¹ / ₂)	1 680-2 ¹ / ₄ 691 (700-2 ¹ / ₄)

EC-3, 10 OCT 2019 to 07 NOV 2019

EC-3, 10 OCT 2019 to 07 NOV 2019