

|             |          |             |
|-------------|----------|-------------|
| APP CRS     | Rwy Idg  | <b>3900</b> |
| <b>046°</b> | TDZE     | <b>989</b>  |
|             | Apt Elev | <b>989</b>  |

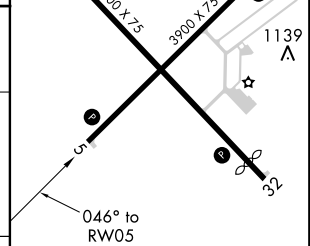
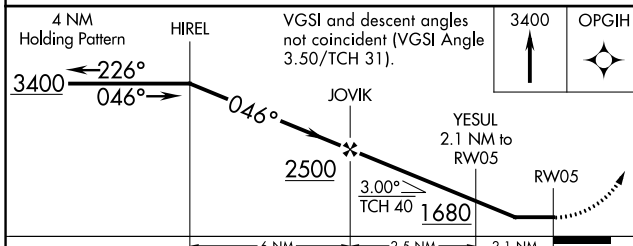
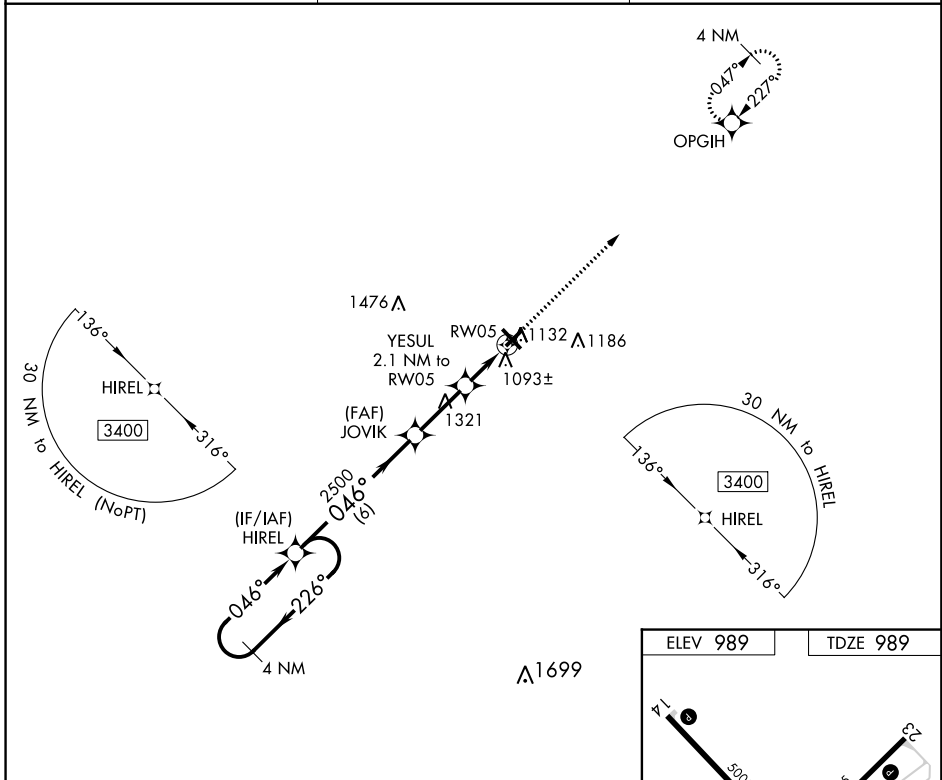
# RNAV (GPS) RWY 5

BURNETT COUNTY (RZN)

**⚠** DME/DME RNP-0.3 NA. Helicopter visibility reduction below 1 SM NA.  
**⚠** Night Landing: Rwy 5, 23, 32 NA. When local altimeter setting not received, use Rush City, MN altimeter setting and increase all MDA 80 feet; increase LNAV Cat C/D visibility 3/8 mile, and Circling Cat C/D visibility 1/4 mile.

MISSED APPROACH: Climb to 3400 direct OPGIH and hold.

|                          |   |  |
|--------------------------|---|--|
| AWOS-3<br><b>118.325</b> | MINNEAPOLIS CENTER<br><b>121.05 397.9</b> | UNICOM<br><b>122.8 (CTAF)</b> <b>📻</b> |
|--------------------------|---|--|



|                   |                    |                      |                      |   |
|-------------------|--------------------|----------------------|----------------------|---|
| CATEGORY          | A                  | B                    | C                    | D |
| LNAV MDA          | 1360-1 371 (400-1) |                      |                      |   |
| <b>📻</b> CIRCLING | 1440-1 451 (500-1) | 1540-1½ 551 (600-1½) | 1680-2¼ 691 (700-2¼) |   |

REIL Rws 5, 14, 23 and 32 **📻**  
 MIRL Rws 5-23 and 14-32 **📻**