

VOR/DME RZN 109.4 Chan 31	APP CRS 051°	Rwy Idg TDZE 989 Apt Elev 989	3900
---	------------------------	---	-------------

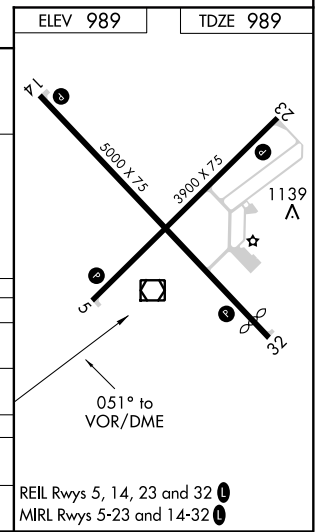
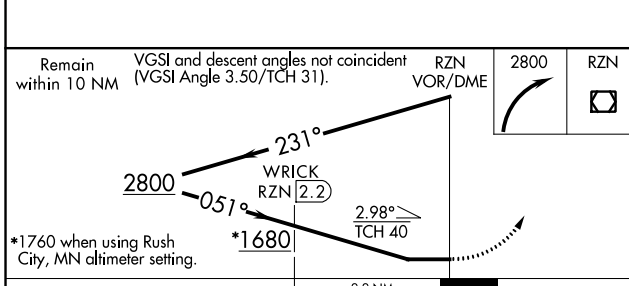
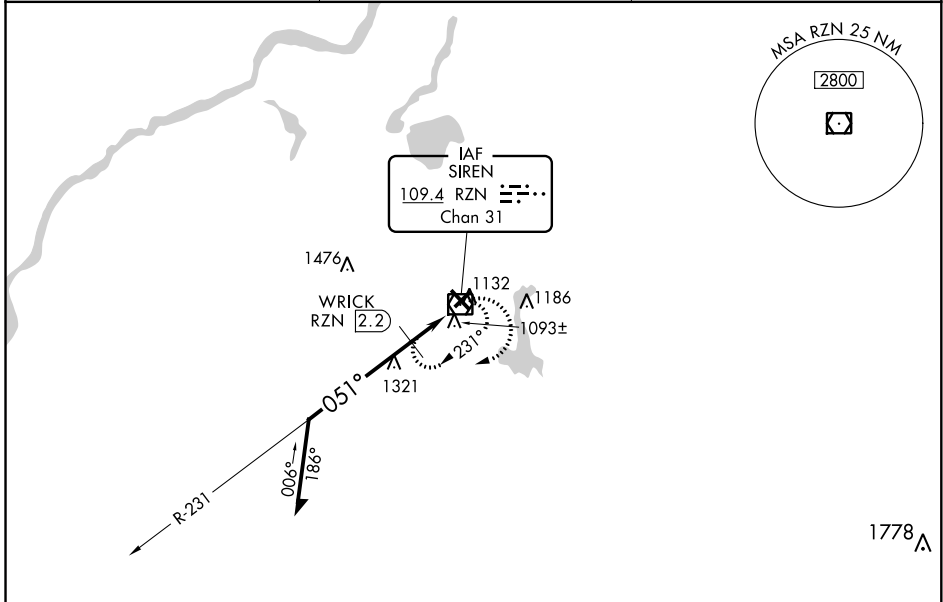
VOR RWY 5

BURNETT COUNTY (RZN)

⚠ When local altimeter setting not received, use Rush City, MN altimeter setting and increase all MDA 80 feet; increase S-5 and Circling Cat B visibility ¼ mile, S-5 and Circling Cat C/D visibility ½ mile; WRICK DME Fix minimums: increase Circling Cat C/D visibility ¼ mile. Helicopter visibility reduction below 1 SM NA. Night Landing: Rwy 5, 23, 32 NA.

MISSED APPROACH:
Climbing right turn to 2800 in RZN VOR/DME holding pattern.

AWOS-3 118.325	MINNEAPOLIS CENTER 121.05 397.9	UNICOM 122.8 (CTAF) 0
--------------------------	---	---------------------------------



CATEGORY	A	B	C	D
S-5	1680-1	691 (700-1)	1680-2	691 (700-2)
C CIRCLING	1680-1	691 (700-1)	1680-2 691 (700-2)	1680-2¼ 691 (700-2¼)
WRICK DME FIX MINIMUMS				
S-5	1620-1	631 (700-1)	1620-1¾	631 (700-1¾)
C CIRCLING	1620-1	631 (700-1)	1620-1¾ 631 (700-1¾)	1680-2¼ 691 (700-2¼)

EC-3, 10 OCT 2019 to 07 NOV 2019

EC-3, 10 OCT 2019 to 07 NOV 2019