

VOR/DME TNU <b>112.5</b> Chan <b>72</b>	APP CRS <b>282°</b>	Rwy Idg TDZE <b>1008</b> Apt Elev <b>1008</b>
---	------------------------	---

# VOR/DME RWY 31

GRINNELL RGNL (GGI)

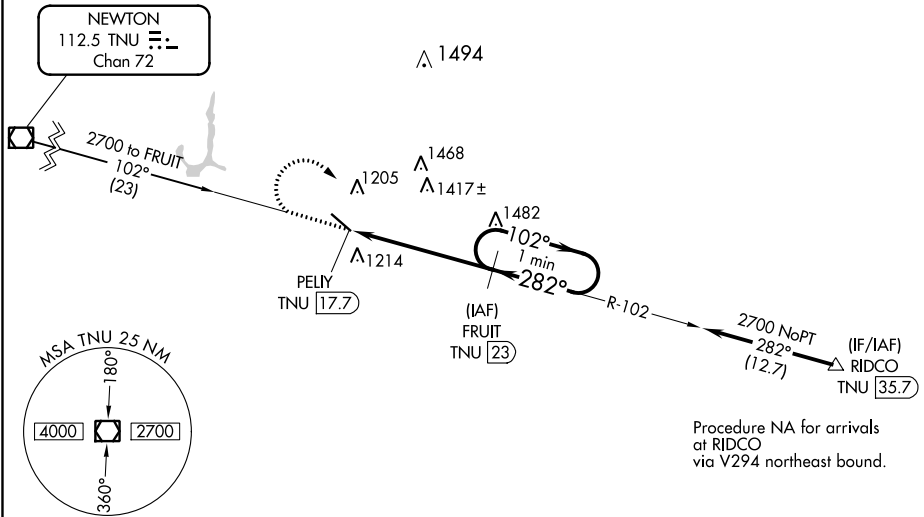
**▽** When local altimeter setting not received, use Newton altimeter setting and increase all MDAs 40 feet.  
**▲** Visibility reduction by helicopters NA.

MISSED APPROACH: Climb to 2700 then right turn via TNU VOR/DME R-102 to FRUIT/TNU 23 DME and hold.

AWOS-3  
**120.725**

CHICAGO CENTER  
**127.05 319.8**

UNICOM  
**122.8** (CTAF) **0**



NC-3, 10 OCT 2019 to 07 NOV 2019

NC-3, 10 OCT 2019 to 07 NOV 2019

ELEV 1008      TDZE 1008

