

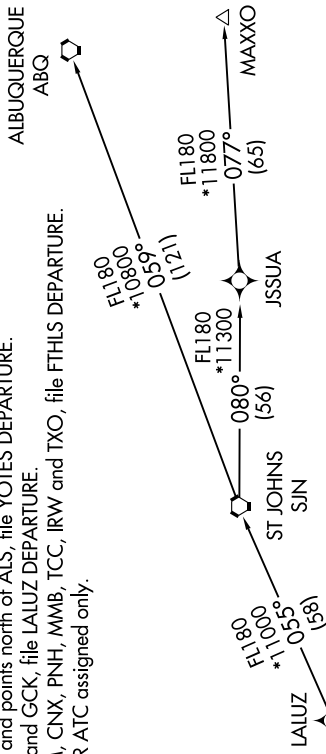
SW-4, 10 OCT 2019 to 07 NOV 2019

- ATIS 119.425
- GND CON 118.0
- GLENDALE TOWER * 121.0
- LUKE DEP CON * 118.15 363.125
- PHOENIX DEP CON 120.7 239.0

- NOTE: RNAV 1.
- NOTE: Turbojets and turboprops only.
- NOTE: RADAR required.
- NOTE: GPS required.
- NOTE: SJN TRANSITION for ABQ terminal arrivals only.
- NOTE: MAXXO TRANSITION ATC assigned only.
- NOTE: Aircraft filing over DEN, RSK, ALS, and points north of ALS, file YOTES DEPARTURE.
- NOTE: Aircraft filing over ABQ, CIM, FTI, and GCK, file LALUZ DEPARTURE.
- NOTE: Aircraft filing over ACH, IBL, ONM, CNX, PNH, MMB, TCC, IRW, and TXO, file FTHLS DEPARTURE.
- NOTE: Aircraft departing KGEU and KGYR ATC assigned only.

TAKEOFF MINIMUMS
Rwys 1, 19: Standard.

**TOP ALTITUDE:
ASSIGNED BY ATC**



DEPARTURE ROUTE DESCRIPTION

- ▼ **TAKEOFF RUNWAY 1:** Climb heading 014° or as assigned by ATC, thence
- ▼ **TAKEOFF RUNWAY 19:** Climb heading 200° or as assigned by ATC, thence

. . . . expect RADAR vectors to FORPE, then on track 055° to LALUZ, then on (transition). Maintain ATC assigned altitude, expect filed altitude 3 minutes after departure.

- ALBUQUERQUE TRANSITION (LALUZ6.ABQ)
- MAXXO TRANSITION (LALUZ6.MAXXO)
- ST JOHNS TRANSITION (LALUZ6.SJN)

NOTE: Chart not to scale.

SW-4, 10 OCT 2019 to 07 NOV 2019