

(YOTES6.YOTES) 18144

YOTES SIX DEPARTURE (RNAV)

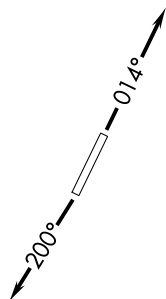
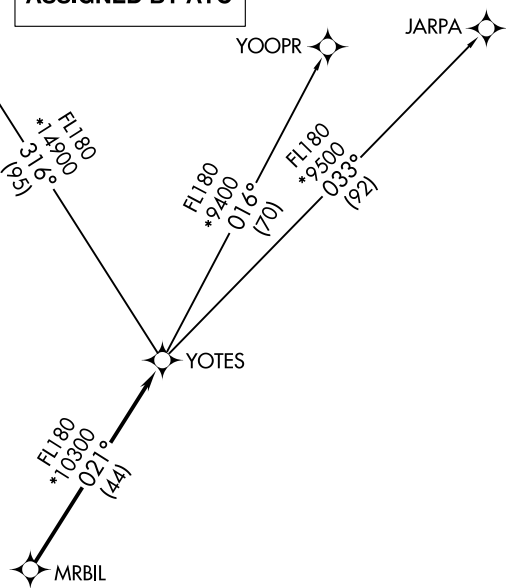
AL-6915 (FAA)

GLENDALE MUNI (G^EU)
GLENDALE, ARIZONA

ATIS
119.425
GND CON
118.0
GLENDALE TOWER *
121.0
LUKE DEP CON *
118.15 363.125
PHOENIX DEP CON
120.7 239.0

GRAND CANYON GCN

**TOP ALTITUDE:
ASSIGNED BY ATC**



- NOTE: RNAV 1.
- NOTE: Turbojets and turboprops only.
- NOTE: RADAR required.
- NOTE: GPS required.
- NOTE: GCN TRANSITION ATC assigned only.
- NOTE: Aircraft departing KGEU and KGYR ATC assigned only.

TAKEOFF MINIMUMS
Rwys 1, 19: Standard.

NOTE: Chart not to scale.



DEPARTURE ROUTE DESCRIPTION

TAKEOFF RUNWAY 1: Climb heading 014° or as assigned by ATC, thence. . . .

TAKEOFF RUNWAY 19: Climb heading 200° or as assigned by ATC, thence. . . .

. . . expect RADAR vectors to MRBIL, then on track 021° to YOTES, then on (transition).
Maintain ATC assigned altitude, expect filed altitude 3 minutes after departure.

GRAND CANYON TRANSITION (YOTES6.GCN)

JARPA TRANSITION (YOTES6.JARPA)

YOOPR TRANSITION (YOTES6.YOOPR)

YOTES SIX DEPARTURE (RNAV)
(YOTES6.YOTES) 24MAY18

GLENDALE, ARIZONA
GLENDALE MUNI (G^EU)

SW-4, 10 OCT 2019 to 07 NOV 2019

SW-4, 10 OCT 2019 to 07 NOV 2019