

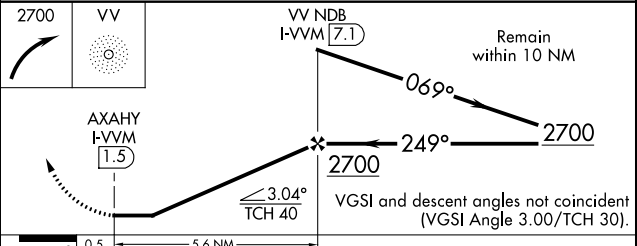
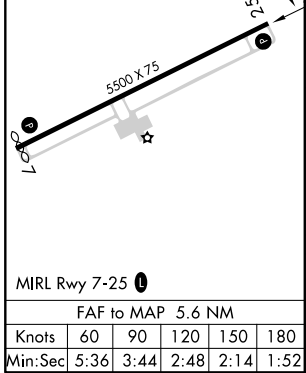
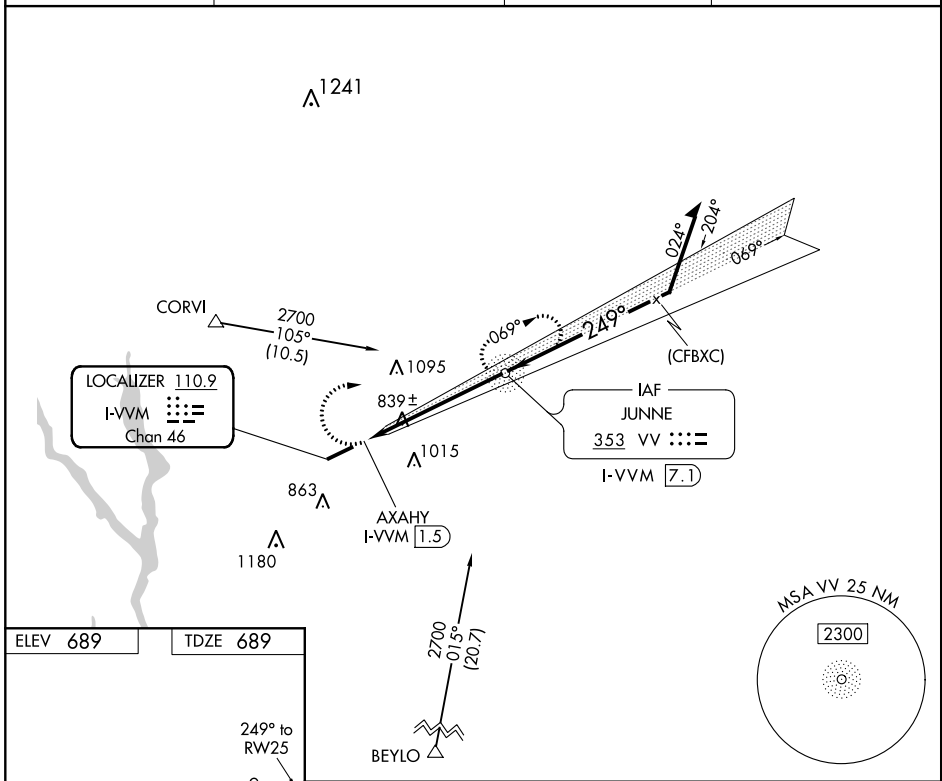
LOC/DME I-VVM <b>110.9</b> Chan <b>46</b>	APP CRS <b>249°</b>	Rwy Idg TDZE Apt Elev	<b>5500</b> <b>689</b> <b>689</b>
---	------------------------	-----------------------------	---

**LOC RWY 25**  
GREENE COUNTY RGNL (3J7)

ADF or DME required for procedure entry. ADF or DME required.  
 ▼ When local altimeter setting not received, use Athens altimeter setting and increase all MDA 80 feet and increase all Cat C/D visibility ¼ mile. Localizer unusable ½ mile inbound. Rwy 25 helicopter visibility reduction below ¾ SM NA.  
 ▲ NA

MISSED APPROACH: Climbing right turn to 2700 direct VV NDB and hold.

AWOS-3 <b>124.525</b>	ATLANTA APP CON ★ <b>132.475 291.1</b>	GCO <b>121.725</b>	UNICOM <b>122.8(CTAF) 0</b>
--------------------------	---	-----------------------	--------------------------------



CATEGORY	A	B	C	D
S-25	1100-1	411 (500-1)	1100-1½	411 (500-1½)
CIRCLING	1220-1	531 (600-1)	1320-1¾ 631 (700-1¾)	1480-2½ 791 (800-2½)

SE-4, 10 OCT 2019 to 07 NOV 2019

SE-4, 10 OCT 2019 to 07 NOV 2019