

WAAS CH 70616 W25A	APP CRS 249°	Rwy Idg TDZE Apt Elev	5500 689 689
--	------------------------	-----------------------------	---

RNAV (GPS) RWY 25

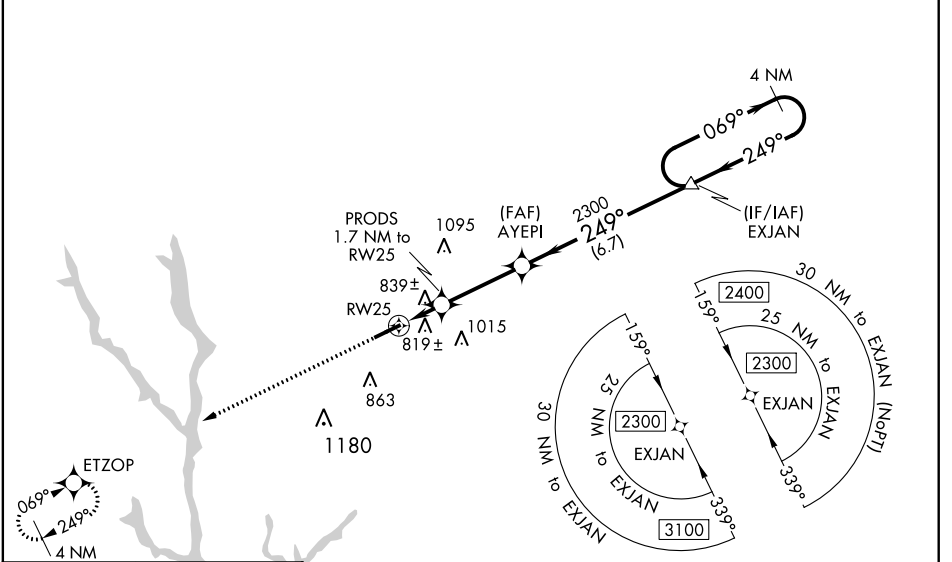
GREENE COUNTY RGNL (3J7)

RNP APCH.

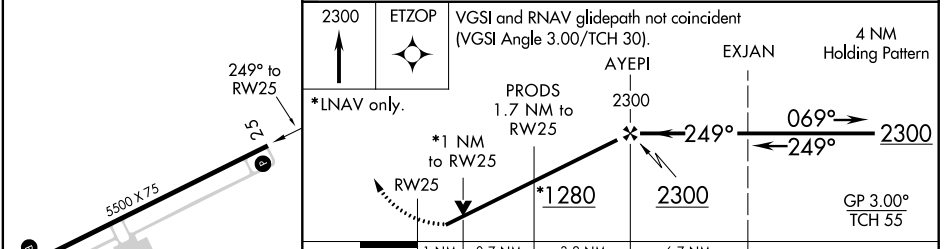
⚠ For uncompensated Baro-VNAV systems, LNAV/VNAV NA below -16°C (4°F) or above 54°C (130°F). Baro-VNAV and VDP NA when using Athens altimeter setting. When local altimeter setting not received, use Athens altimeter setting and increase LPV DA to 1051 and LNAV/VNAV DA to 1135 and all MDA 80 feet; increase LPV and LNAV/VNAV all Cats visibility and LNAV and Circling Cats C/D visibility ¼ SM. Rwy 25 helicopter visibility reduction below ¼ SM NA.

MISSED APPROACH: Climb to 2300 direct ETZOP and hold.

AWOS-3 124.525	ATLANTA APP CON * 132.475 291.1	GCO 121.725	UNICOM 122.8 (CTAF) 📻
--------------------------	---	-----------------------	--



ELEV 689	TDZE 689
----------	----------



CATEGORY	A	B	C	D
LPV DA		981-7/8	292 (300-7/8)	
LNAV/VNAV DA		1065-1 1/4	376 (400-1 1/4)	
LNAV MDA	1080-1	391 (400-1)	1080-1 1/8	391 (400-1 1/8)
C CIRCLING	1140-1 451 (500-1)	1180-1 491 (500-1)	1320-1 3/4 631 (700-1 3/4)	1480-2 1/2 791 (800-2 1/2)

SE-4, 10 OCT 2019 to 07 NOV 2019

SE-4, 10 OCT 2019 to 07 NOV 2019

MIRL Rwy 7-25 **📻**