

APP CRS	Rwy Idg	5401
069°	TDZE	678
	Apt Elev	689

RNAV (GPS) RWY 7

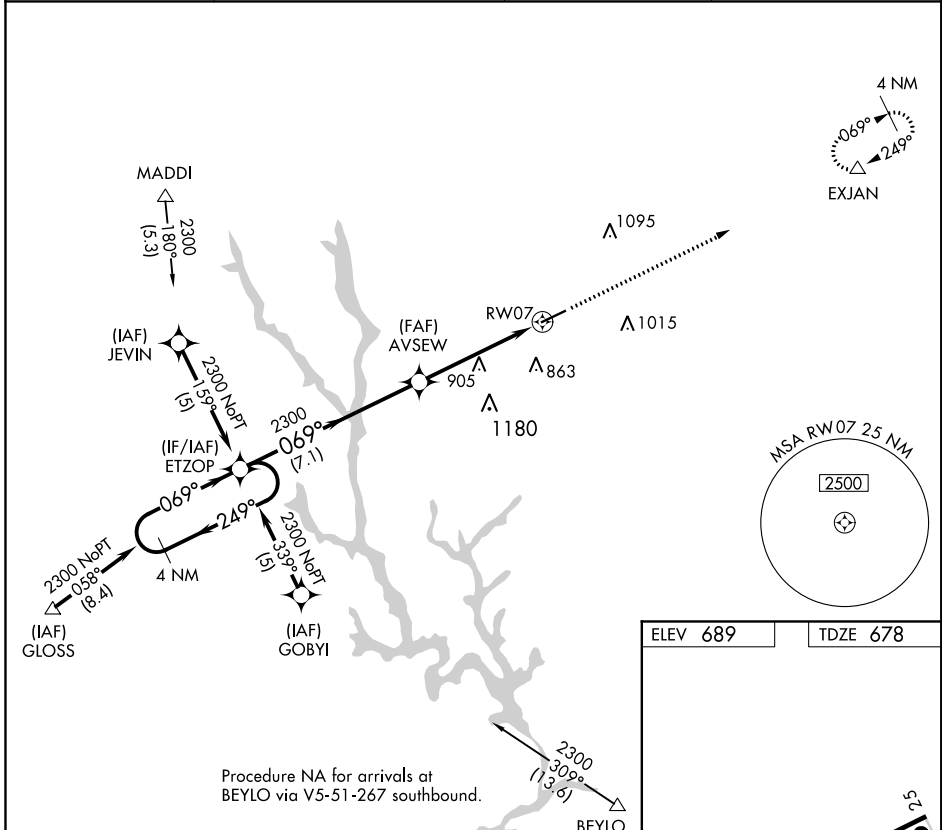
GREENE COUNTY RGNL (3J7)

RNP APCH.

▼ When local altimeter setting not received, use Athens altimeter setting and increase all MDA 80 feet, and all Cat C and D visibility ¼ mile. VDP NA when using Athens altimeter setting. Rwy 7 helicopter visibility reduction below ¾ SM NA.

MISSED APPROACH: Climb to 2300 direct EXJAN and hold.

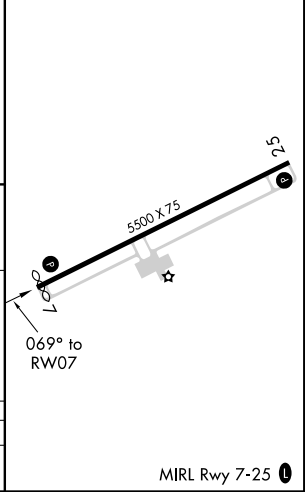
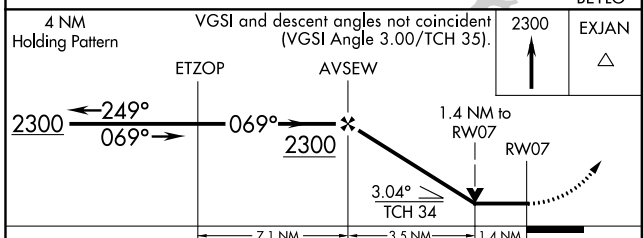
AWOS-3 124.525	ATLANTA APP CON * 132.475 219.1	GCO 121.725	UNICOM 122.8 (CTAF) 0
--------------------------	---	-----------------------	---------------------------------



SE-4, 10 OCT 2019 to 07 NOV 2019

SE-4, 10 OCT 2019 to 07 NOV 2019

ELEV 689	TDZE 678
----------	----------



CATEGORY	A	B	C	D
LNAV MDA	1160-1	482 (500-1)	1160-1⅓ 482 (500-1⅓)	1160-1½ 482 (500-1½)