

VOR/DME AHN 109.6 Chan 33	APP CRS 156°	Rwy Idg TDZE Apt Elev 689	N/A N/A 689
---	------------------------	---	--

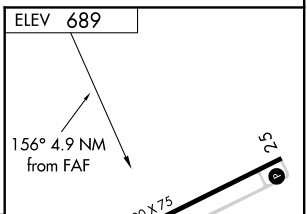
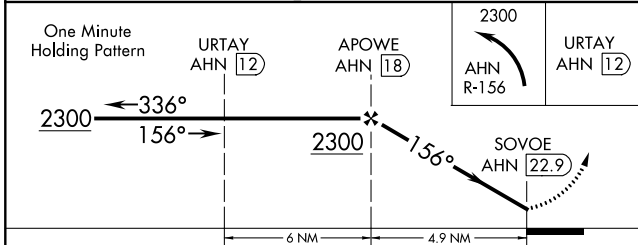
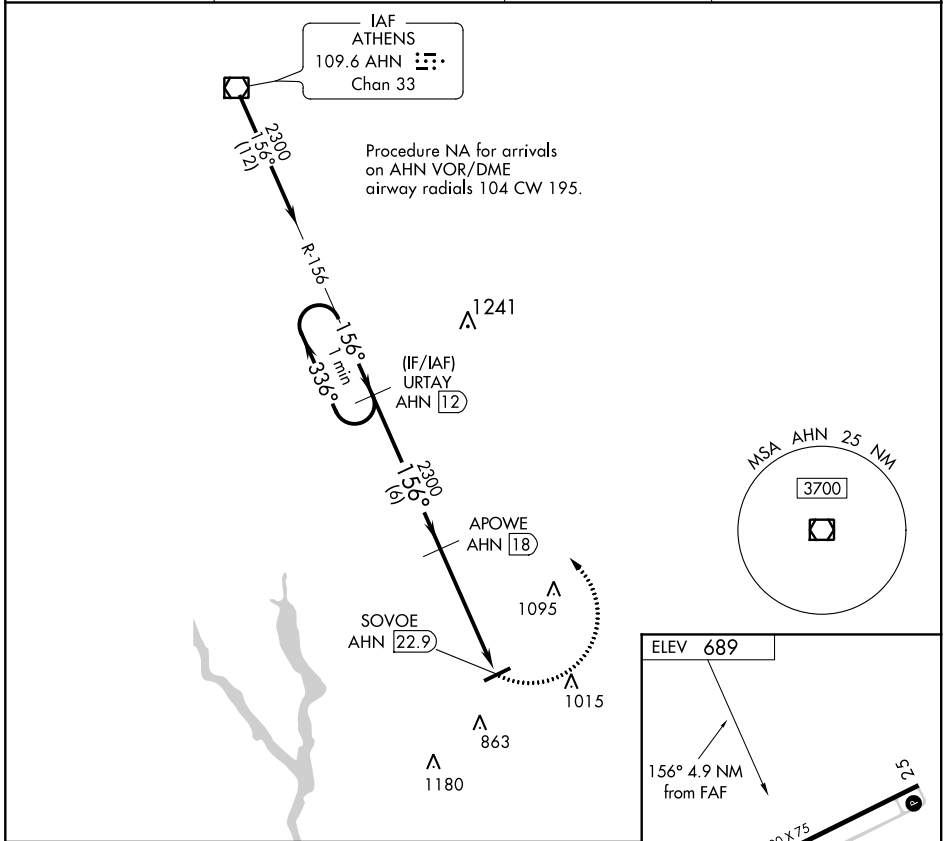
VOR-B
GREENE COUNTY RGNL (3J7)

DME Required.

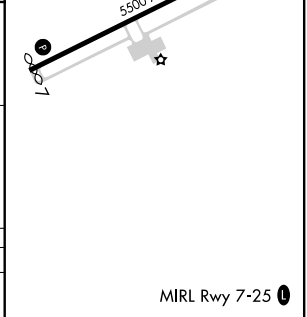
▼ When local altimeter setting not received, use Athens altimeter setting:
▲ increase all MDAs 80 feet and visibility Cats C and D ¼ SM.

MISSED APPROACH: Climbing left turn to 2300 on AHN VOR/DME R-156 to URTAY and hold.

AWOS-3 124.525	ATLANTA APP CON ★ 132.475 291.1	GCO 121.725	UNICOM 122.8 (CTAF) ①
--------------------------	---	-----------------------	---------------------------------



CATEGORY	A	B	C	D
① CIRCLING	1240-1	551 (600-1)	1320-1¼ 631 (700-1¼)	1480-2½ 791 (800-2½)



SE-4, 10 OCT 2019 to 07 NOV 2019

SE-4, 10 OCT 2019 to 07 NOV 2019