

VORTAC RZC <b>116.4</b> Chan 111	APP CRS <b>115°</b>	Rwy Idg TDZE <b>1748</b> Apt Elev <b>1748</b>	<b>3601</b>
----------------------------------------	------------------------	-----------------------------------------------------	-------------

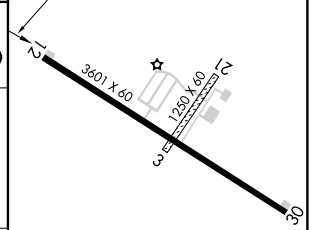
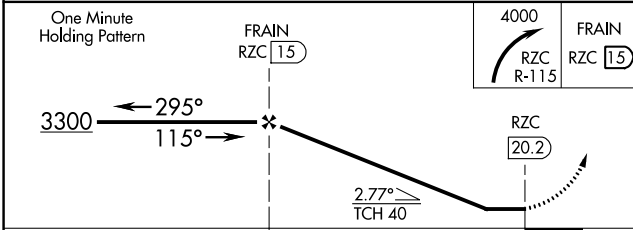
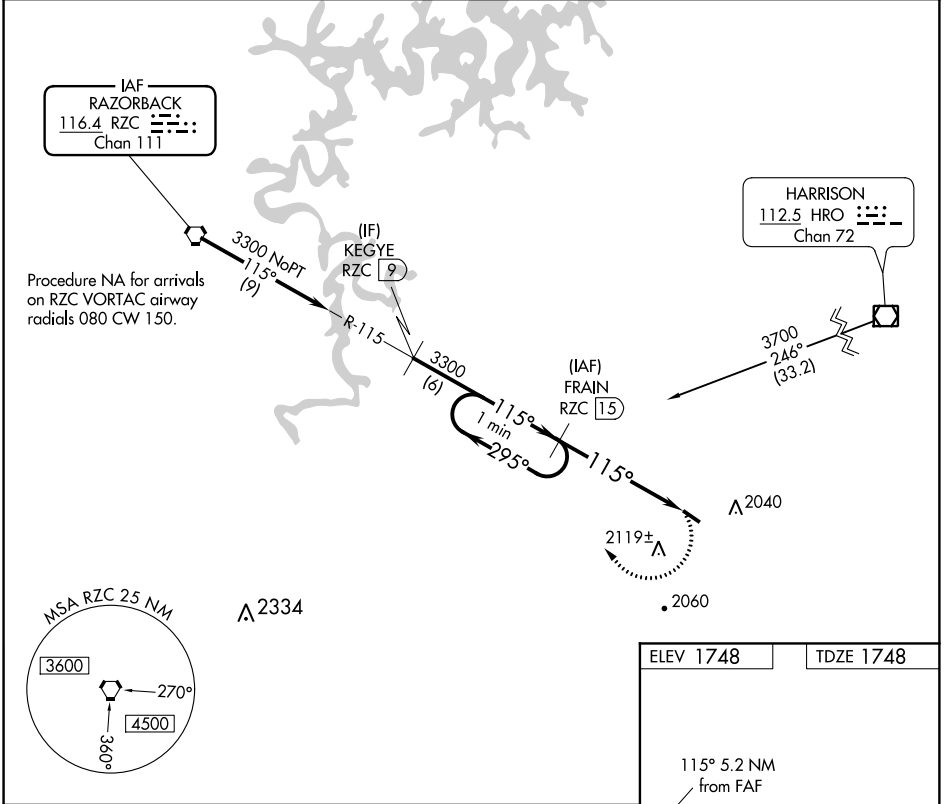
# VOR/DME RWY 12

HUNTSVILLE MUNI (H34)

**NA** Use Springdale altimeter setting; when not received use Drake Field altimeter setting and increase all MDA 20 feet and increase S-12 Cat C visibility 1/2 mile and Circling Cat C visibility 1/4 mile.

MISSED APPROACH: Climbing right turn to 4000 on RZC VORTAC R-115 to FRAIN/RZC 15 DME and hold.

ASG AWOS-3 <b>124.675</b>	RAZORBACK APP CON * <b>126.6 305.2</b>	UNICOM <b>122.8</b> (CTAF) <b>0</b>
------------------------------	-------------------------------------------	----------------------------------------



CATEGORY	A	B	C	D
S-12	2500-1 752 (800-1)	2500-1 1/4 752 (800-1 1/4)	2500-2 752 (800-2)	NA
<b>C</b> CIRCLING	2500-1 752 (800-1)	2520-1 1/4 772 (800-1 1/4)	2520-2 1/4 772 (800-2 1/4)	NA

MIRL Rwy 12-30 **0**

SC-1, 10 OCT 2019 to 07 NOV 2019

SC-1, 10 OCT 2019 to 07 NOV 2019