

WAAS CH 78436 W19A	APP CRS 186°	Rwy Idg 4694 TDZE 90 Apt Elev 90
--	------------------------	---

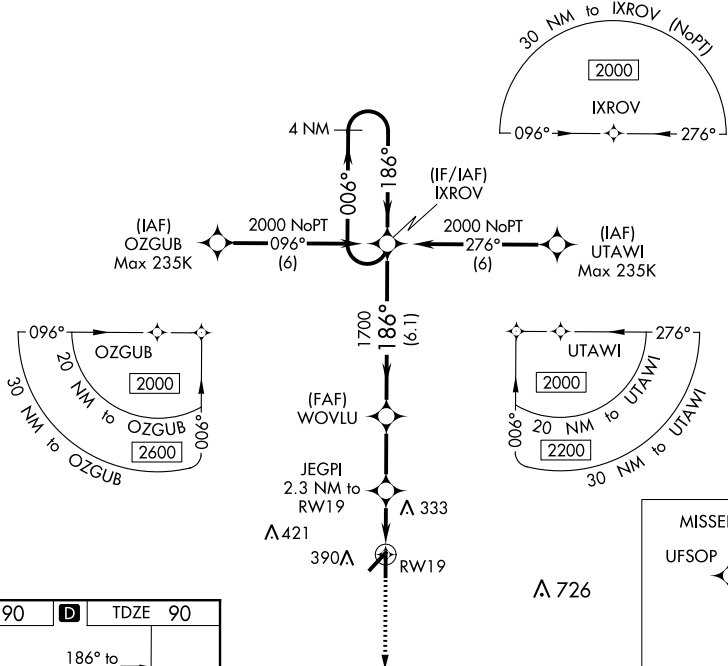
RNAV (GPS) RWY 19

ZEPHYRHILLS MUNI (ZPH)

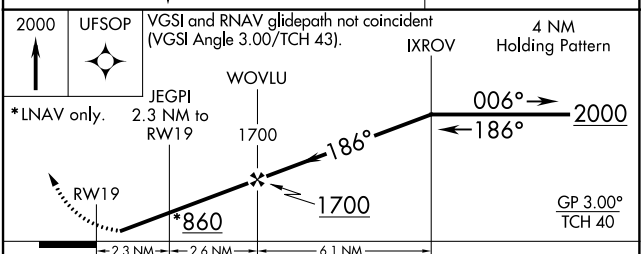
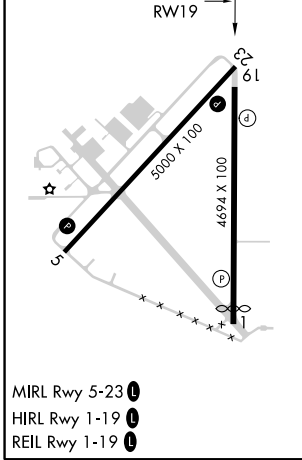
⚠ Baro-VNAV NA when using Tampa Executive altimeter setting. For uncompensated Baro-VNAV systems, LNAV/VNAV NA below -15°C (5°F) or above 54°C (130°F).
⚠ DME/DME RNP-0.3 NA. When local altimeter setting not received, use Tampa Executive altimeter setting and increase all DA 48 feet and all MDA 60 feet. Increase LPV and LNAV/VNAV all Cats visibility 1/8 mile and LNAV Cat C/D and Circling Cat C/D visibility 1/4 mile.

MISSED APPROACH:
Climb to 2000 direct UFSOP and hold.

AWOS-3PT 118.975	TAMPA APP CON 119.9 290.3	UNICOM 123.075 (CTAF) 0
----------------------------	-------------------------------------	-----------------------------------



ELEV 90	D	TDZE 90
---------	----------	---------



CATEGORY	A	B	C	D
LPV DA		340-7/8	250 (300-7/8)	
LNAV/VNAV DA		380-1	290 (300-1)	
LNAV MDA		460-1	370 (400-1)	
C CIRCLING	740-1	650 (700-1)	740-1 3/4 650 (700-1 3/4)	740-2 650 (700-2)

SE-3, 10 OCT 2019 to 07 NOV 2019

SE-3, 10 OCT 2019 to 07 NOV 2019